



Price
£289,950

Freehold

2x  1x  2x 

**Jessamine Terrace, Two
Mile Ash Road, Barns
Green, Horsham, West
Sussex, RH13**

cubitt&west
Helping you move forwards



Main features

- Sold with no forward chain
- Period cottage with character features
- Generous rear garden
- Beautiful central village location within catchment area of Barns Green school
- Close to A24 and a short drive from Horsham

Accommodation

GROUND FLOOR

Lounge : 12'3 x 10'0 (3.74m x 3.05m)
 Dining Room : 12'3 x 9'11 (3.74m x 3.02m)
 Kitchen : 8'10 x 4'10 (2.69m x 1.47m)
 Bathroom

FIRST FLOOR

Bedroom 1: 12'2 x 10'0 (3.71m x 3.05m)
 Bedroom 2: 9'11 x 9'7 (3.02m x 2.92m)

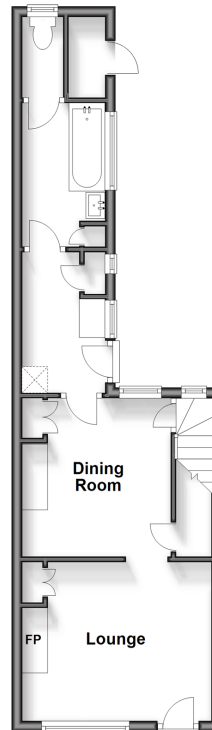
SECOND FLOOR

Loft Room : 12'2 x 10'10 (3.71m x 3.30m)

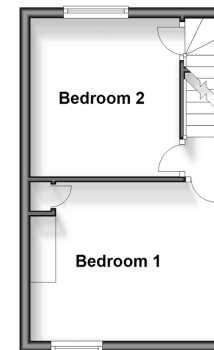
OUTSIDE

Off Road Parking
 Rear Garden

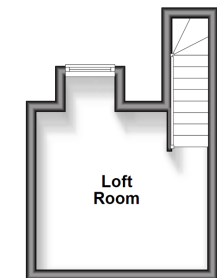
Ground Floor
 Approx. 34.5 sq. metres (370.9 sq. feet)



First Floor
 Approx. 22.7 sq. metres (244.5 sq. feet)



Second Floor
 Approx. 11.9 sq. metres (128.4 sq. feet)



Call Southwater - 01403 731901 ■ cubittandwest.co.uk

■ Legal advice should be taken to verify fixtures/fittings, planning, alterations and/or lease details

■ Appliances & services are untested, dimensions are approximate and floor plans are not to scale



21909354/20240116/LA/OS