



Price
£430,000

Freehold

3x  2x  1x 

**Roman Lane,
Southwater, Horsham,
West Sussex, RH13**

cubitt&west
Helping you move forwards



Main features

- Modern Home built by Bovis Homes in 2013 to their 'Southwold' design in Harvest Meadows
- Open plan living arrangements
- Village location
- Close to Southwater Country Park and Downs Link
- Excellent transport links to Horsham, the A24 and to London on the train

Accommodation

GROUND FLOOR

Hallway

Cloakroom: 6'8 x 3'2 (2.03m x 0.97m)

Lounge/Diner: 17'6 x 15'6 (5.34m x 4.73m)

Kitchen: 9'3 x 8'2 (2.82m x 2.49m)

FIRST FLOOR

Landing

Bedroom 1: 12'8 x 10'3 (3.86m x 3.13m)

En-suite Shower room

Bedroom 2: 10'2 x 8'9 (3.10m x 2.67m)

Bedroom 3: 10'3 x 6'5 (3.13m x 1.96m)

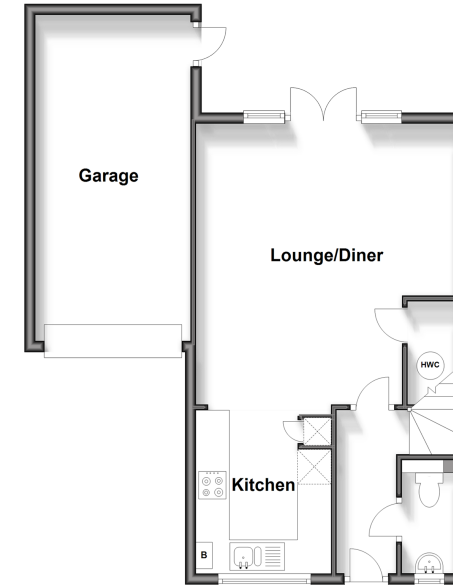
Bathroom: 6'9 x 6'3 (2.06m x 1.91m)

OUTSIDE

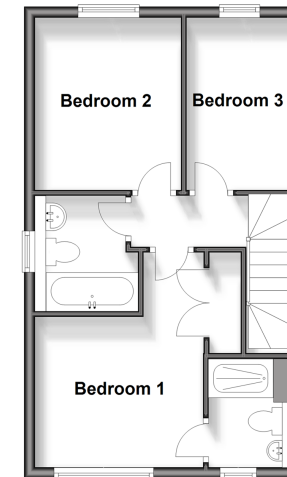
Off Road Parking

Rear Garden

Ground Floor
Approx. 55.5 sq. metres (597.8 sq. feet)



First Floor
Approx. 38.4 sq. metres (413.4 sq. feet)



Call Southwater - 01403 731901 ■ cubittandwest.co.uk

- Legal advice should be taken to verify fixtures/fittings, planning, alterations and/or lease details
- Appliances & services are untested, dimensions are approximate and floor plans are not to scale



21909383/20240320/LA/OS