



OVER 60?

You could get up to
59% off the price!*



Video Tour available

Price

£270,000

Leasehold

2x  1x  1x 

**Autumn Drive, Sutton,
Surrey, SM2**

cubitt&west
Helping you move forwards



Main features

- Allocated parking space for convenience
- Walking distance to Belmont Village and station
- Close to green spaces including Overton Park
- Perfect starter home or investment purchase
- Good order throughout

Accommodation

GROUND FLOOR

Entrance Hall

Lounge: 19'8 into bay x 9'9 (6.00m x 2.97m)

Kitchen: 7'2 x 7'0 (2.19m x 2.14m)

Bedroom 1: 12'0 x 8'2 (3.66m x 2.49m)

Bedroom 2: 8'6 x 5'7 (2.59m x 1.70m)

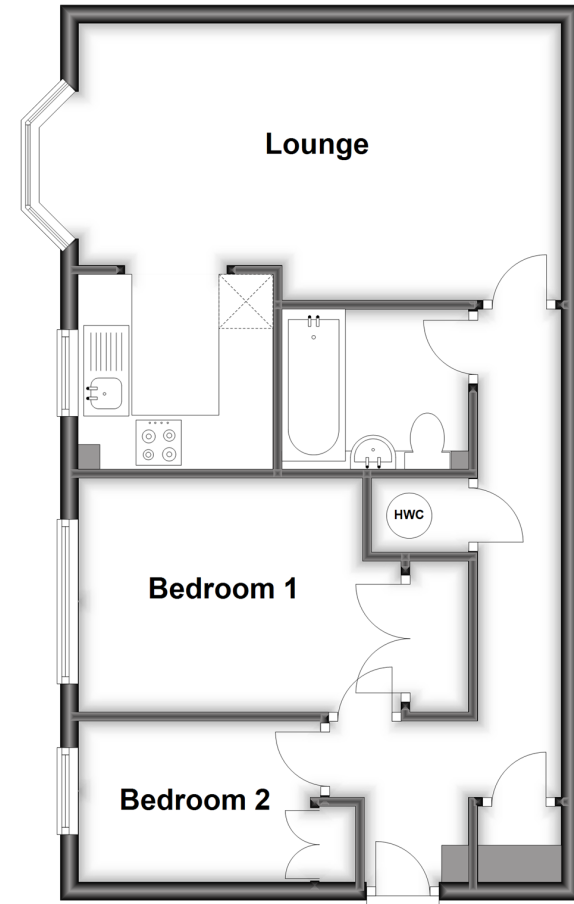
Bathroom

OUTSIDE

Allocated Parking
Communal Garden

Ground Floor

Approx. 50.8 sq. metres (547.2 sq. feet)



Call Sutton - 020 8661 0330 ■ cubittandwest.co.uk

- A private rental licensing scheme applies to some properties in this area, please contact us before proceeding
- Legal advice should be taken to verify fixtures/fittings, planning, alterations and/or lease details
- Appliances & services are untested, dimensions are approximate and floor plans are not to scale
- Our Homewise partnership offer a 'Home for Life' plan to buyers over 60, granting a lifetime lease for your protection and reducing the purchase price by up to 59%



22004599/20220628/KWK/KWK