



OVER 60?

Secure this property
for up to **59% less!**

Price

£700,000

Freehold

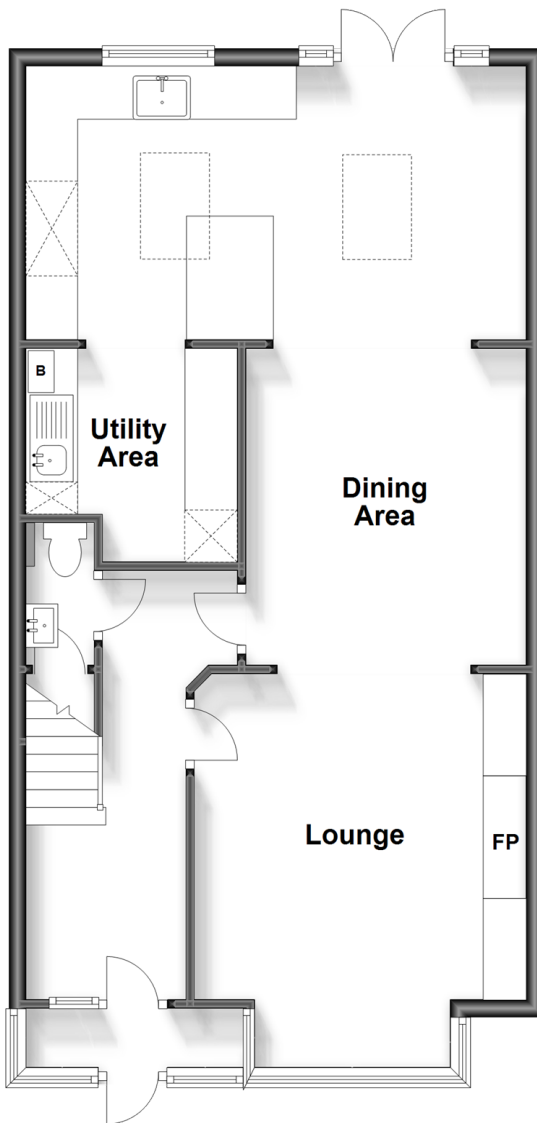
3x  1x  1x 

**Greenhill, Sutton,
Surrey, SM1**

cubitt&west
Helping you move forwards

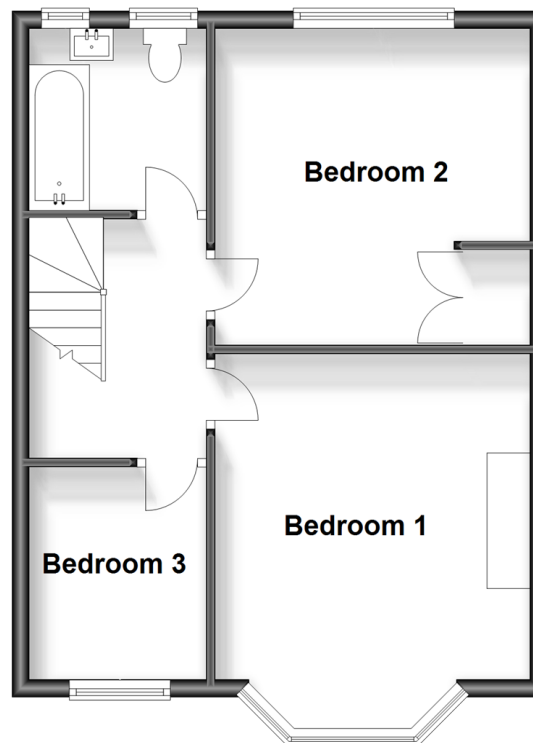
Ground Floor

Approx. 66.0 sq. metres (710.8 sq. feet)



First Floor

Approx. 44.1 sq. metres (474.4 sq. feet)



Accommodation

GROUND FLOOR

Entrance Hall

Lounge: 14'5 x 12'5 (4.40m x 3.79m)

Dining Room: 11'8 x 10'8 (3.56m x 3.25m)

Kitchen: 18'2 x 10'2 (5.54m x 3.10m)

Utility Room: 8'4 x 7'6 (2.54m x 2.29m)

Cloakroom

FIRST FLOOR

Landing

Bedroom 1: 14'7 x 11'8 (4.45m x 3.56m)

Bedroom 2: 12'0 x 11'9 (3.66m x 3.58m)

Bedroom 3: 8'1 x 6'7 (2.47m x 2.01m)

Bathroom: 6'8 x 6'7 (2.03m x 2.01m)

OUTSIDE

Front Garden

Rear Garden



Main features

- Unique, lavish & high end finish throughout that has been very well thought out for functionality.
- Sought after location in a quiet, safe & peaceful neighbourhood with beautiful surroundings.
- Close proximity to transport links into London and a short walk away from Sutton Town Centre.
- Outstanding and very good schools on your doorstep
- Extended and open plan living space



Nearest Schools

Primary Schools: All Saints Benhilton CofE Primary 0.2 miles, Rushy Meadow Primary 0.6 miles
Secondary Schools: Greenshaw High School 0.1 miles, Sutton Grammar School 0.7 miles, Glenthorne High School 0.7 miles



Transport Information

Train Stations: Sutton Common 0.4 miles, Carshalton 0.9 miles, West Sutton 0.9 miles



Address

Greenhill, Sutton, Surrey, SM1



Directions

For directions to this property please contact us.



cubitt&west
Helping you move forwards

Call Sutton Branch 020 8661 0330 ■ cubittandwest.co.uk



■ A private rental licensing scheme applies to some properties in this area, please contact us before proceeding
■ Appliances & services are untested, dimensions are approximate and floor plans are not to scale

■ Legal advice should be taken to verify fixtures/fittings, planning, alterations and/or lease details
■ Through a Homewise Home For Life Plan people aged 60+ can secure this property for up to 59% less, by purchasing a Lifetime Lease.



22009055/20231118/CR/KWK