



Price

£350,000

Leasehold

2x  2x  1x 

**Aspects, Throwley Way,
Sutton, Surrey, SM1**

OVER 60?

Secure this property
for up to **59% less!**

cubitt&west
Helping you move forwards



Main features

- High quality modern decor
- Panoramic views over London
- 24 hour concierge, lift, gym and parking included
- Central London just a short train ride away
- Bright and airy open plan living
- Perfect for first time buyers and investors alike

Accommodation

FOURTEENTH FLOOR

Entrance Hall

Lounge: 13'6 x 10'4 (4.12m x 3.15m)

Kitchen Area: 10'1 x 7'8 (3.08m x 2.34m)

Bedroom 1: 13'10 x 9'6 (4.22m x 2.90m)

En-Suite Shower Room

Bedroom 2: 10'0 x 8'9 (3.05m x 2.67m)

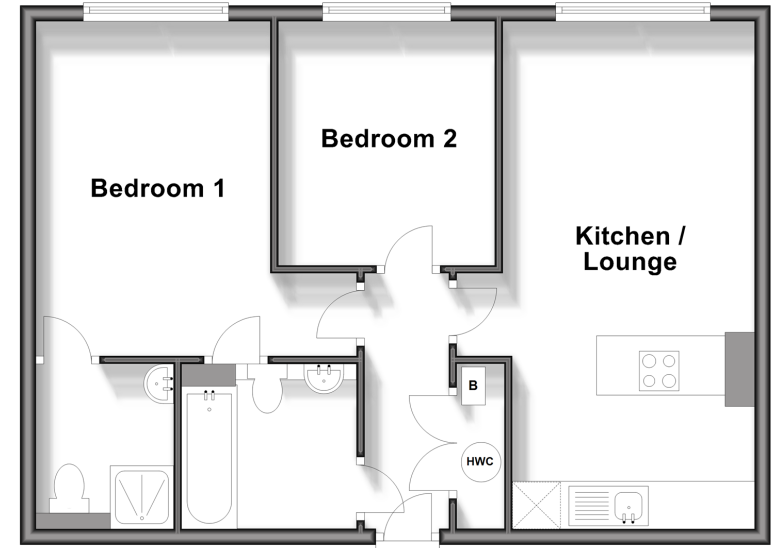
Bathroom

OUTSIDE

Allocated Parking

Fourteenth Floor

Approx. 57.4 sq. metres (617.9 sq. feet)



Call Sutton - 020 8661 0330 ■ cubittandwest.co.uk

- A private rental licensing scheme applies to some properties in this area, please contact us before proceeding
- Legal advice should be taken to verify fixtures/fittings, planning, alterations and/or lease details
- Appliances & services are untested, dimensions are approximate and floor plans are not to scale
- Through a Homewise Home For Life Plan people aged 60+ can secure this property for up to 59% less, by purchasing a Lifetime Lease.



22010418/20240203/CR/JH