



OVER 60?

Secure this property
for up to **59% less!**

Price

£230,000

Leasehold

1x  1x  1x 

**Kingswood Drive,
Sutton, Surrey, SM2**

cubitt&west
Helping you move forwards



Main features

- Ground floor with direct access to communal gardens
- Bonus of two allocated parking spaces
- Walking distance to Overton Park and Belmont Village
- Well located for transport links
- Bright and spacious lounge

Accommodation

GROUND FLOOR

Entrance Hall

Lounge: 14'9 x 13'8 (4.50m x 4.17m)

Kitchen: 9'2 x 6'1 (2.80m x 1.86m)

Bedroom 1: 12'5 x 8'9 (3.79m x 2.67m)

Bathroom: 7'2 x 6'1 (2.19m x 1.86m)

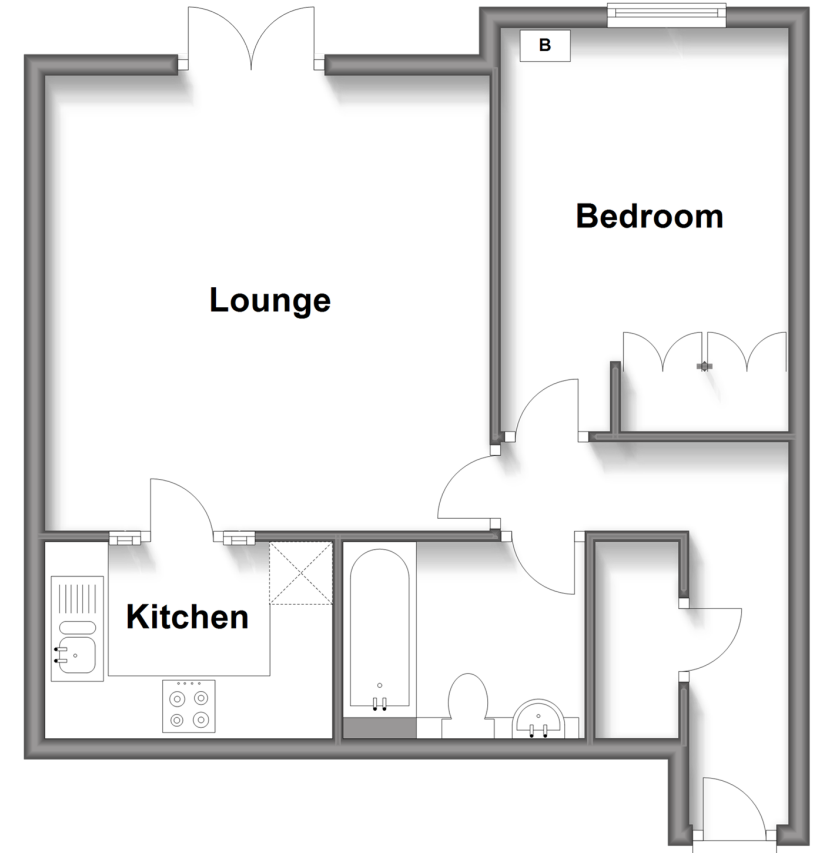
OUTSIDE

2 Allocated Parking Spaces

Communal Gardens

Ground Floor

Approx. 47.0 sq. metres (505.8 sq. feet)



Call Sutton - 020 8661 0330 ■ cubittandwest.co.uk

- A private rental licensing scheme applies to some properties in this area, please contact us before proceeding
- Legal advice should be taken to verify fixtures/fittings, planning, alterations and/or lease details
- Appliances & services are untested, dimensions are approximate and floor plans are not to scale
- Through a Homewise Home For Life Plan people aged 60+ can secure this property for up to 59% less, by purchasing a Lifetime Lease.



22010460/20240408/CR/KV