



Price
£275,000

Leasehold

2x  1x  1x 

**Carew Court, Basinghall
Gardens, Sutton, Surrey,
SM2**

OVER 60?

Secure this property
for up to **59% less!**



Video Tour available

cubitt&west
Helping you move forwards



Main features

- Well presented and in immaculate condition
- Garage en-bloc - great for storage
- Bonus of private balcony
- Well located for Sutton station and bus routes
- In the catchment area for outstanding primary and secondary schools

Accommodation

THIRD FLOOR

Entrance Hall

Lounge/Diner: 17'1 x 11'5 (5.21m x 3.48m)

Balcony

Kitchen: 14'4 x 6'5 (4.37m x 1.96m)

Bedroom 1: 14'7 x 9'5 (4.45m x 2.87m)

Bedroom 2: 14'3 x 7'8 (4.35m x 2.34m)

Bathroom : 6'2 x 5'8 (1.88m x 1.73m)

Separate Toilet

OUTSIDE

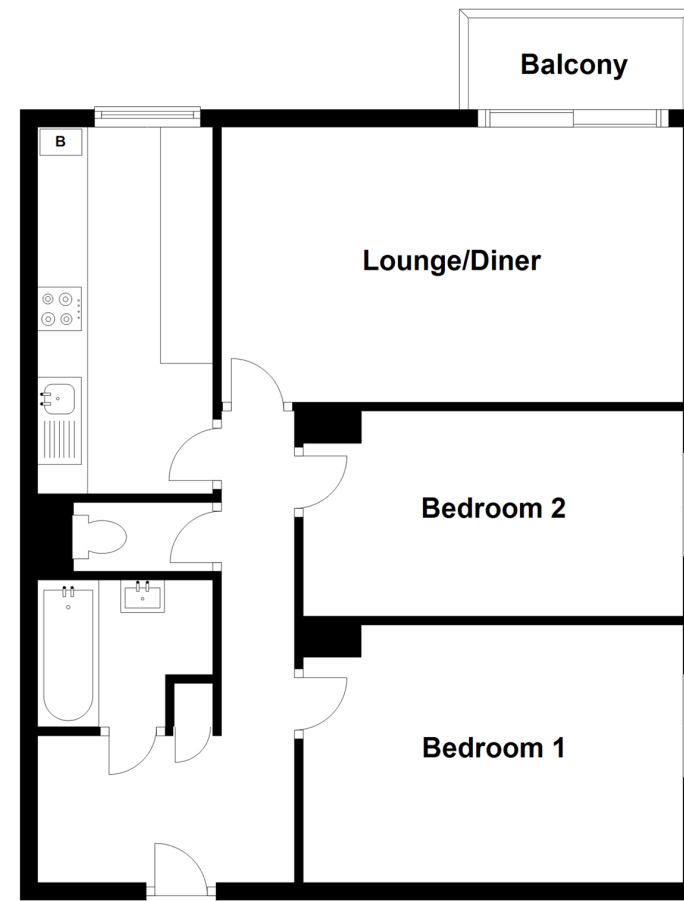
Garage En-Bloc

Residents Permit Parking

Communal Grounds

Third Floor

Approx. 63.9 sq. metres (688.1 sq. feet)



Call Sutton - 020 8661 0330 ■ cubittandwest.co.uk

- A private rental licensing scheme applies to some properties in this area, please contact us before proceeding
- Legal advice should be taken to verify fixtures/fittings, planning, alterations and/or lease details
- Appliances & services are untested, dimensions are approximate and floor plans are not to scale
- Through a Homewise Home For Life Plan people aged 60+ can secure this property for up to 59% less, by purchasing a Lifetime Lease.



22011764/20240306/CR/KV