



Guide Price
£135,000

Leasehold

1x  1x  1x 

**Forest Dene Court,
Cedar Road, Sutton,
Surrey, SM2**



Video Tour available

cubitt&west
Helping you move forwards



Main features

- Direct access to private patio and communal gardens
- Well located for transport links
- Walking distance to local amenities
- Good condition throughout
- Warden assisted for peace of mind and a residents lounge
- No onward chain to wait for

Accommodation

GROUND FLOOR

Entrance Hall

Lounge: 15'8 x 10'5 (4.78m x 3.18m)

Kitchen: 7'4 x 5'5 (2.24m x 1.65m)

Bedroom : 12'5 x 8'7 (3.79m x 2.62m)

Bathroom

OUTSIDE

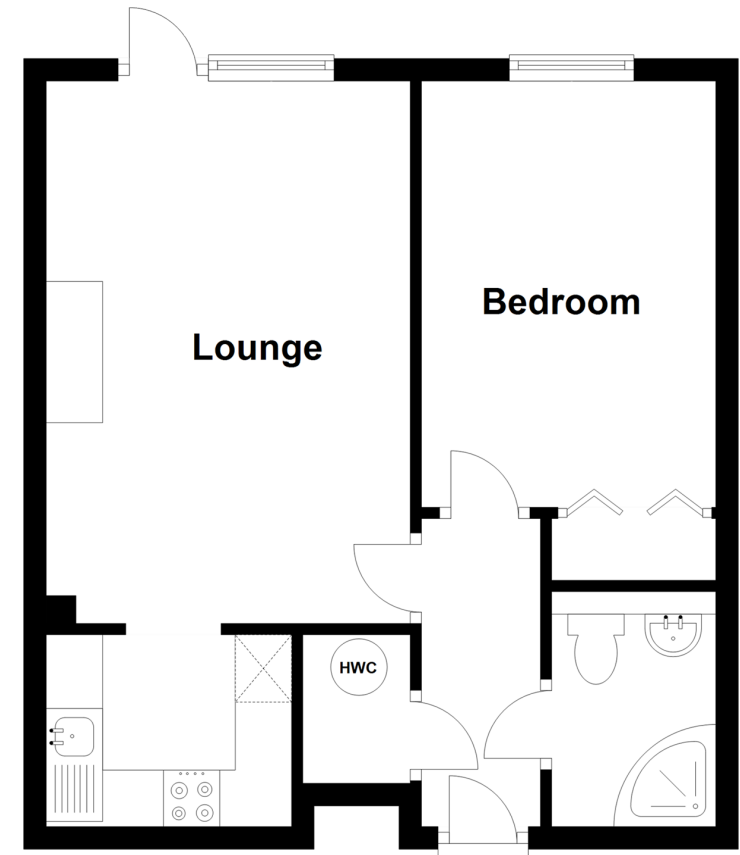
Private Patio

Communal Gardens

Off Road Parking

Ground Floor

Approx. 38.8 sq. metres (417.2 sq. feet)



Call Sutton - 020 8661 0330 ■ cubittandwest.co.uk

- A private rental licensing scheme applies to some properties in this area, please contact us before proceeding
- Legal advice should be taken to verify fixtures/fittings, planning, alterations and/or lease details
- Appliances & services are untested, dimensions are approximate and floor plans are not to scale



22012439/20220426/CR/KV