



Price

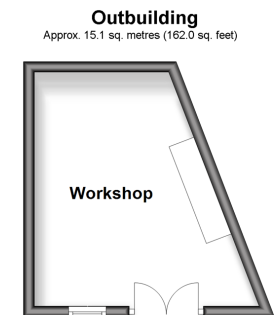
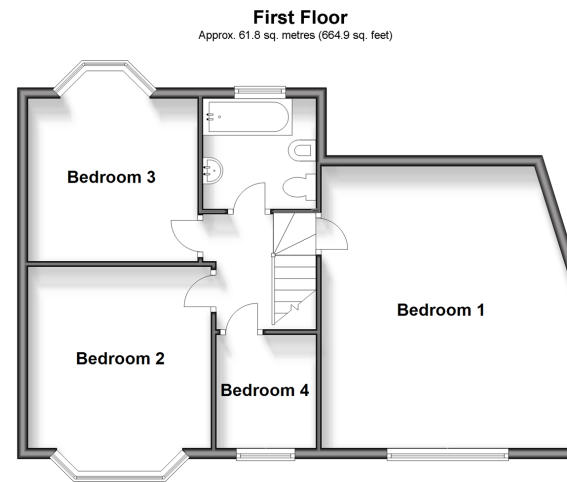
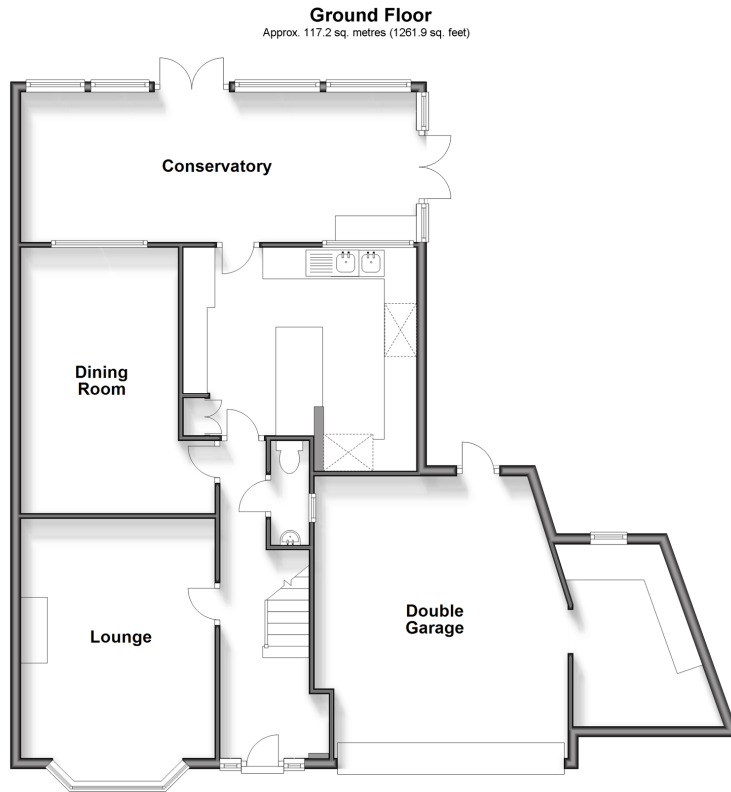
£750,000

Freehold

4x  1x  2x 

**Prince Of Wales Road,
Sutton, Surrey, SM1**

cubitt&west
Helping you move forwards



Accommodation

GROUND FLOOR

Entrance Hall

Lounge: 16'5 x 11'9 (5.01m x 3.58m)

Dining Room: 17'0 x 9'6 (5.19m x 2.90m)

Kitchen: 14'2 x 14'1 (4.32m x 4.30m)

Conservatory: 23'9 x 9'5 (7.24m x 2.87m)

Cloakroom

Landing

Bedroom 1: 17'7 x 15'4 (5.36m x 4.68m)

Bedroom 2: 13'2 x 11'5 (4.02m x 3.48m)

Bedroom 3: 12'4 x 10'4 (3.76m x 3.15m)

Bedroom 4: 7'2 x 6'0 (2.19m x 1.83m)

Bathroom

OUT BUILDING

Workshop

OUTSIDE

Gated Driveway

Integral Garage

Rear Garden

FIRST FLOOR



Main features

- Gorgeous family home in popular residential location
- Gated driveway with space for up to 5 cars
- Integrated garage with ample space to park a large car
- Ready to move into condition
- Within the catchment areas for superb schools including Carshalton Boys & Girls and Greenshaw
- Close to local shops & amenities



Nearest Schools

Primary Schools: Rushy Meadow Primary 0.5 miles,, All Saints Benhilton CoE Primary 0.7 miles
Secondary Schools: Greenshaw High School 0.4 miles, Carshalton Boys Sports College 0.4 miles, Carshalton High School for Girls 0.7 miles



Transport Information

Train Stations: Carshalton 0.9 miles, Sutton Common 1.1 miles, West Sutton 1.2 miles



Address

Prince Of Wales Road, Sutton, Surrey, SM1



Directions

For directions to this property please contact us.



cubitt&west
Helping you move forwards

Call Sutton Branch 020 8661 0330 ■ cubittandwest.co.uk



■ A private rental licensing scheme applies to some properties in this area, please contact us before proceeding
■ Legal advice should be taken to verify fixtures/fittings, planning, alterations and/or lease details

■ If buying to let, the energy rating will need to be improved to at least 'E' rating before you can let the property
■ Appliances & services are untested, dimensions are approximate and floor plans are not to scale

22012492/20240416/CR/KV