



Price
£200,000

**Share of
Freehold**

1x  1x  1x 

**Bedford Terrace, Cedar
Road, Sutton, Surrey,
SM2**

OVER 60?

Secure this property
for up to **59% less!**

cubitt&west
Helping you move forwards



Main features

- Sought after South Sutton location
- Walking distance to Sutton station and amenities
- Modern kitchen and bathroom
- Allocated parking to the rear
- Large living space with ample storage on offer

Accommodation

GROUND FLOOR

Entrance Hall

Studio Room: 17'0 x 10'9 (5.19m x 3.28m)

Kitchen: 8'4 x 5'3 (2.54m x 1.60m)

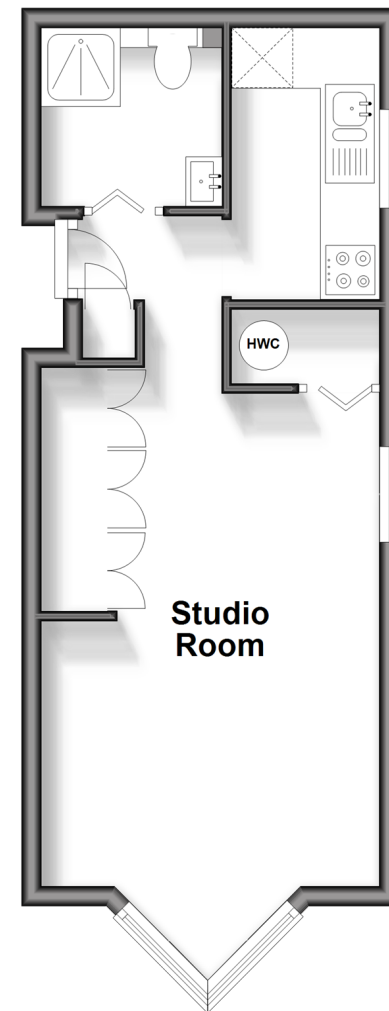
Bathroom: 5'8 x 4'9 (1.73m x 1.45m)

OUTSIDE

Allocated Parking

Ground Floor

Approx. 30.2 sq. metres (325.4 sq. feet)



Call Sutton - 020 8661 0330 ■ cubittandwest.co.uk

- A private rental licensing scheme applies to some properties in this area, please contact us before proceeding
- Legal advice should be taken to verify fixtures/fittings, planning, alterations and/or lease details
- Appliances & services are untested, dimensions are approximate and floor plans are not to scale
- Through a Homewise Home For Life Plan people aged 60+ can secure this property for up to 59% less, by purchasing a Lifetime Lease.



22014198/20240218/CR/JH