



Price

£325,000

Leasehold

2x  1x  1x 

**Homefield Park, Sutton,
Surrey, SM1**

OVER 60?

Secure this property
for up to **59% less!**

cubitt&west
Helping you move forwards



Main features

- Sought after development in the heart of Sutton town centre
- Both bedrooms doubles
- Private garage and lift operated block
- Ideal for a first time buyer or downsizer
- Offered either with tenant in situ or chain free

Accommodation

THIRD FLOOR

Entrance Hall

Lounge: 16'6 x 16'4 (5.03m x 4.98m)

Kitchen: 7'11 x 7'10 (2.41m x 2.39m)

Bedroom 1: 13'4 x 11'9 (4.07m x 3.58m)

Bedroom 2

Bathroom

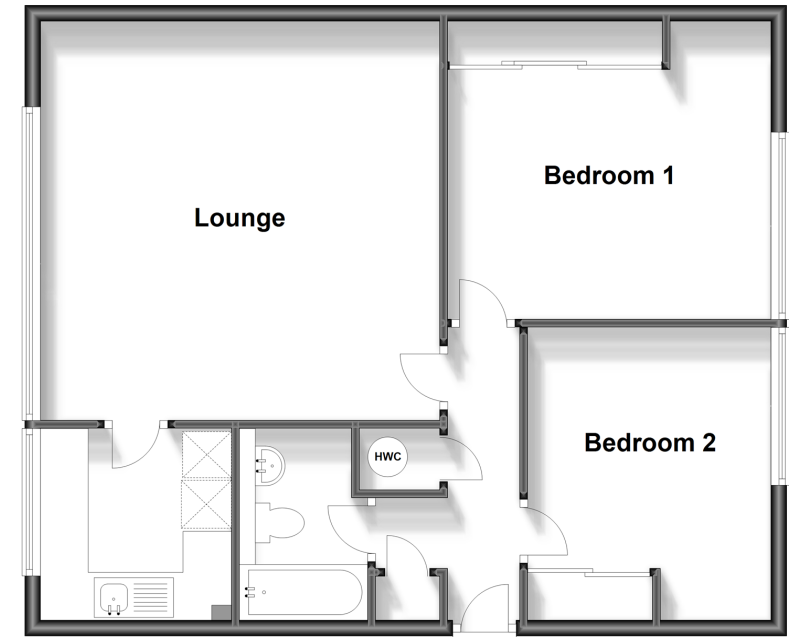
OUTSIDE

Garage

Communal Gardens

Third Floor

Approx. 69.4 sq. metres (747.3 sq. feet)



Call Sutton - 020 8661 0330 ■ cubittandwest.co.uk

- A private rental licensing scheme applies to some properties in this area, please contact us before proceeding
- Legal advice should be taken to verify fixtures/fittings, planning, alterations and/or lease details
- Appliances & services are untested, dimensions are approximate and floor plans are not to scale
- Through a Homewise Home For Life Plan people aged 60+ can secure this property for up to 59% less, by purchasing a Lifetime Lease.



22015963/20240218/CR/MS