



Price
£250,000

Leasehold

1x  1x  1x 

**Audley Place, Sutton,
Surrey, SM2**

OVER 60?

Secure this property
for up to **59% less!**

cubitt&west
Helping you move forwards



Main features

- Excellent internal condition, ready to move straight in to
- Garage & on street parking
- Bright & sunny rooms with spacious proportions
- Cul-de-sac location, close to parks & green spaces
- Walking distance to town centre & station

Accommodation

SECOND FLOOR

Entrance Hall

Lounge/Diner: 15'9 x 7'6 (4.80m x 2.29m)

Kitchen: 8'9 x 7'6 (2.67m x 2.29m)

Bedroom : 11'11 x 8'10 (3.63m x 2.69m)

Bathroom

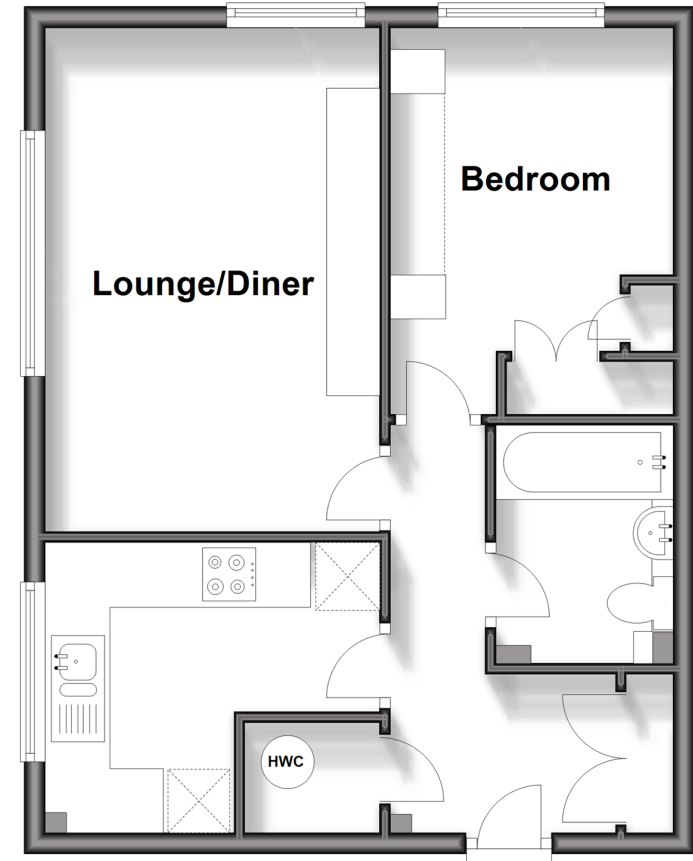
OUTSIDE

Garage

Communal Garden

Second Floor

Approx. 44.7 sq. metres (481.1 sq. feet)



Call Sutton - 020 8661 0330 ■ cubittandwest.co.uk

- A private rental licensing scheme applies to some properties in this area, please contact us before proceeding
- Legal advice should be taken to verify fixtures/fittings, planning, alterations and/or lease details
- Appliances & services are untested, dimensions are approximate and floor plans are not to scale
- Through a Homewise Home For Life Plan people aged 60+ can secure this property for up to 59% less, by purchasing a Lifetime Lease.



22016069/20240504/CR/KWK