



Price

£120,000

Leasehold

1x  1x  1x 

**Forest Dene Court,
Cedar Road, Sutton,
Surrey, SM2**

cubitt&west
Helping you move forwards



Main features

- Ready to move into chain free home
- Located in South Sutton moments away from local Station and High Street
- Communal Areas ideal for socialising with residents
- Ample storage throughout for added convenience
- Allocated Parking Space

Accommodation

SECOND FLOOR

Entrance Hall

Lounge: 22'4 x 15'11 (6.81m x 4.85m)

Kitchen: 12'3 x 7'2 (3.74m x 2.19m)

Bedroom : 16'5 x 14'2 (5.01m x 4.32m)

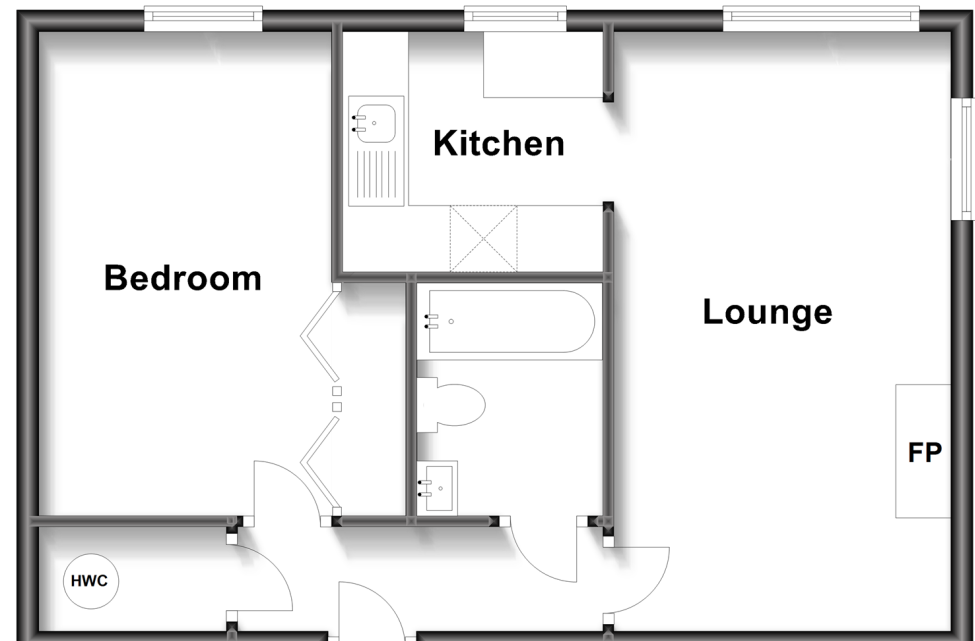
Bathroom : 8'9 x 7'7 (2.67m x 2.31m)

OUTSIDE

Residents Permit Parking

Second Floor

Approx. 44.8 sq. metres (482.7 sq. feet)



Call Sutton - 020 8661 0330 ■ cubittandwest.co.uk

■ A private rental licensing scheme applies to some properties in this area, please contact us before proceeding

■ Appliances & services are untested, dimensions are approximate and floor plans are not to scale

■ Legal advice should be taken to verify fixtures/fittings, planning, alterations and/or lease details



22016931/20230413/JH/MS