



Price
£335,000

Leasehold

2x  1x  1x 

**Quail Court, Brighton
Road, Sutton, Surrey,
SM2**

OVER 60?

Secure this property
for up to **59% less!**

cubitt&west
Helping you move forwards



Main features

- Popular South Sutton location
- Renovated throughout to a high specification
- Modern kitchen and bathroom
- Underfloor heating in kitchen
- Benefits from a long lease in excess of 900 years
- Walking distance to station and High Street

Accommodation

FIRST FLOOR

Entrance Hall

Lounge/Diner: 16'1 x 12'3 (4.91m x 3.74m)

Kitchen: 10'7 x 7'8 (3.23m x 2.34m)

Bedroom 1: 13'1 x 8'6 (3.99m x 2.59m)

Bedroom 2: 12'2 x 6'7 (3.71m x 2.01m)

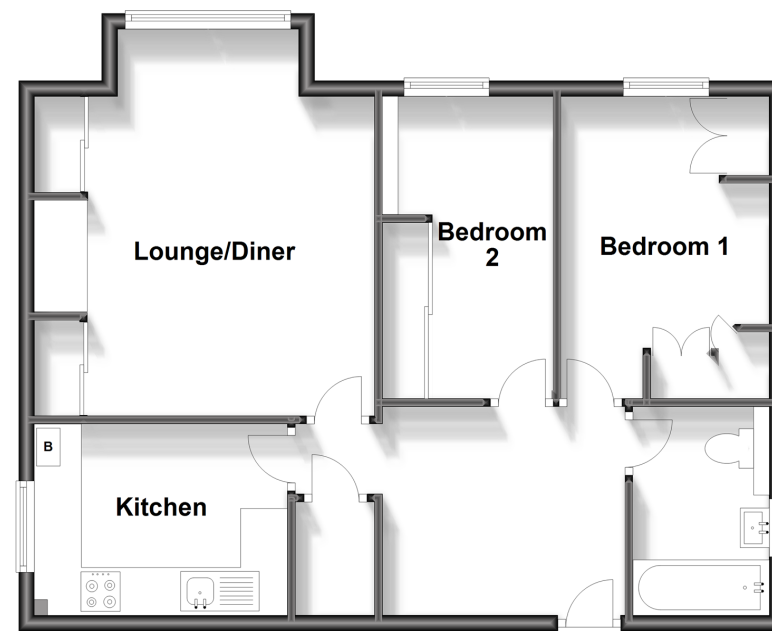
Bathroom: 8'1 x 6'8 (2.47m x 2.03m)

OUTSIDE

Allocated Parking
Communal Gardens

Upper Ground Floor

Approx. 62.5 sq. metres (673.1 sq. feet)



Call Sutton - 020 8661 0330 ■ cubittandwest.co.uk

- A private rental licensing scheme applies to some properties in this area, please contact us before proceeding
- Legal advice should be taken to verify fixtures/fittings, planning, alterations and/or lease details
- Appliances & services are untested, dimensions are approximate and floor plans are not to scale
- Through a Homewise Home For Life Plan people aged 60+ can secure this property for up to 59% less, by purchasing a Lifetime Lease.



22016988/20230905/CR/KV