



Price

£280,000

Leasehold

2x  1x  1x 

**Printwork Apartments,
London Road, Sutton,
Surrey, SM3**

OVER 60?

Secure this property
for up to **59% less!**



Video Tour available

cubitt&west
Helping you move forwards



Main features

- **Allocated parking**
- **Well presented and in immaculate condition throughout**
- **Lift and concierge service**
- **Excellent transport links within easy reach of northern line**
- **Modern and stylish apartment with integrated appliances**

Accommodation

SECOND FLOOR

Entrance Hall

Lounge Area: 14'5 x 8'8 (4.40m x 2.64m)

Kitchen Area: 8'5 x 6'8 (2.57m x 2.03m)

Bedroom 1: 9'8 x 8'4 (2.95m x 2.54m)

Bedroom 2: 8'9 x 7'8 (2.67m x 2.34m)

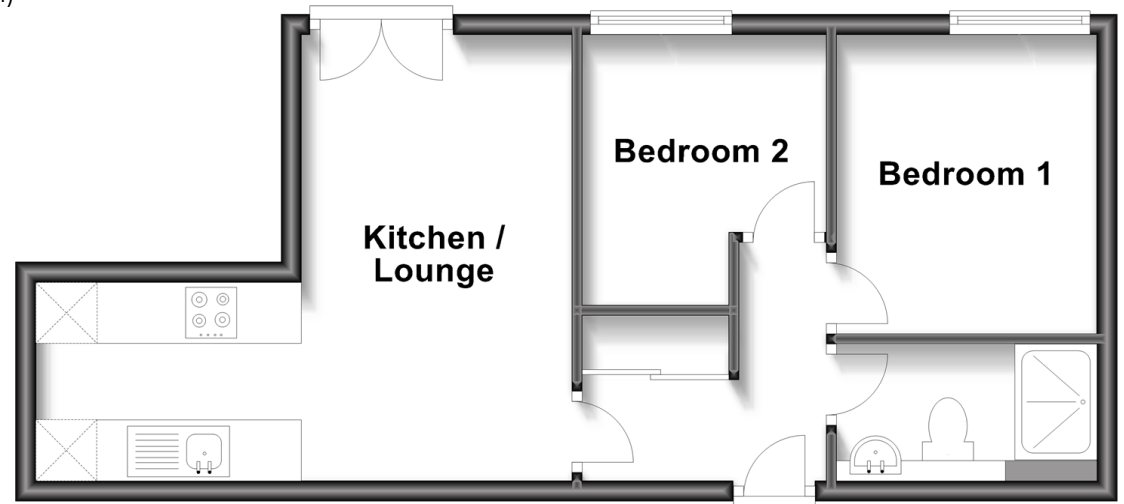
Shower Room

OUTSIDE

Allocated Parking Space

Second Floor

Approx. 39.4 sq. metres (423.7 sq. feet)



Call Sutton - 020 8661 0330 ■ cubittandwest.co.uk

- A private rental licensing scheme applies to some properties in this area, please contact us before proceeding
- Appliances & services are untested, dimensions are approximate and floor plans are not to scale

- Legal advice should be taken to verify fixtures/fittings, planning, alterations and/or lease details
- Through a Homewise Home For Life Plan people aged 60+ can secure this property for up to 59% less, by purchasing a Lifetime Lease.