



Price

£280,000

Leasehold

2x  1x  1x 

**Chipstead Close, Sutton,
Surrey, SM2**

cubitt&west
Helping you move forwards



Main features

- Quiet cul de sac location with views overlooking Overton Park
- Within walking distance to both Belmont and Sutton stations
- Great condition, ready to move in to
- Would make an excellent first time or investment purchase
- Close to a choice of excellent primary and secondary schools

Accommodation

FIRST FLOOR

Entrance Hall

Lounge: 16'6 x 13'10 (5.03m x 4.22m)

Kitchen: 12'11 x 6'9 (3.94m x 2.06m)

Bedroom 1: 12'9 x 9'7 (3.89m x 2.92m)

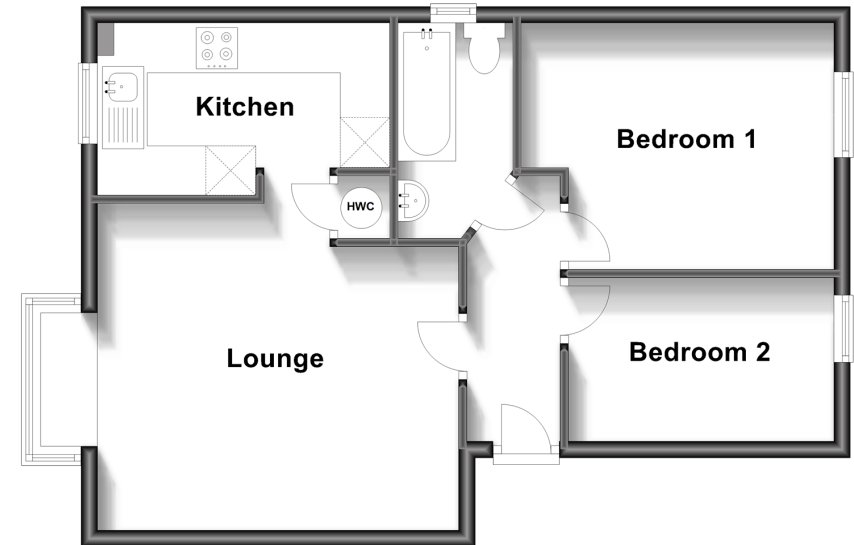
Bedroom 2: 11'2 x 6'3 (3.41m x 1.91m)

Bathroom: 9'2 x 4'5 (2.80m x 1.35m)

OUTSIDE

Off Road Parking

First Floor
Approx. 50.7 sq. metres (545.5 sq. feet)



Call Sutton - 020 8661 0330 ■ cubittandwest.co.uk

- A private rental licensing scheme applies to some properties in this area, please contact us before proceeding
- Legal advice should be taken to verify fixtures/fittings, planning, alterations and/or lease details
- Appliances & services are untested, dimensions are approximate and floor plans are not to scale



22017192/20230812/CR/KV