



OVER 60?

Secure this property
for up to **59% less!**

Price

£240,000

Leasehold

1x  1x  1x 

**Christopher Court,
Western Road, Sutton,
Surrey, SM1**

cubitt&west
Helping you move forwards



Main features

- Presented in good condition throughout with a refurbished kitchen
- Bright and spacious lounge/dining room
- Large double bedroom
- Well located for Sutton town centre
- 3 main stations within a mile - ideal for commuters

Accommodation

GROUND FLOOR

Entrance Hall

Lounge/Dining Room: 16'7 x 11'1 (5.06m x 3.38m)

Kitchen: 9'5 x 6'5 (2.87m x 1.96m)

Bedroom : 13'1 x 9'8 (3.99m x 2.95m)

Bathroom

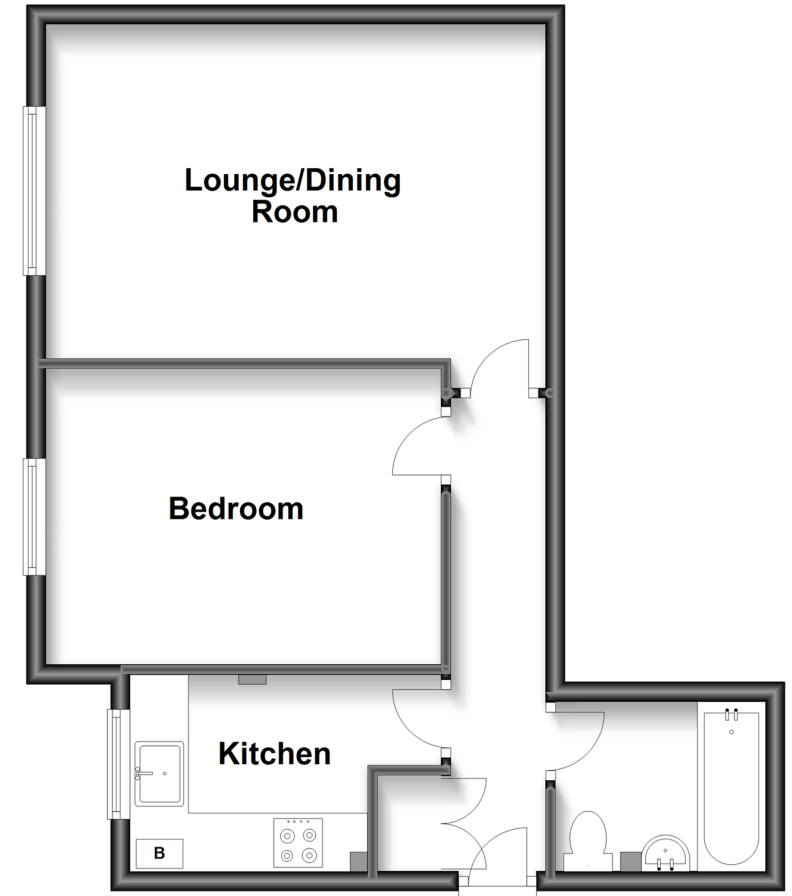
OUTSIDE

Allocated Parking

Communal Gardens

Ground Floor

Approx. 46.8 sq. metres (503.4 sq. feet)



Call Sutton - 020 8661 0330 ■ cubittandwest.co.uk

- A private rental licensing scheme applies to some properties in this area, please contact us before proceeding
- Legal advice should be taken to verify fixtures/fittings, planning, alterations and/or lease details
- Appliances & services are untested, dimensions are approximate and floor plans are not to scale
- Through a Homewise Home For Life Plan people aged 60+ can secure this property for up to 59% less, by purchasing a Lifetime Lease.



22017271/20231111/CR/KV