



OVER 60?

Secure this property
for up to **59% less!**

Price

£350,000

Leasehold

2x  1x  1x 

**Eaton Road, Sutton,
Surrey, SM2**

cubitt&west
Helping you move forwards



Main features

- Beautifully designed and renovated apartment close to Sutton Station
- Remodelled kitchen with bespoke joinery
- Garage en-bloc & affordable permit parking on the road
- Walking distance to Sutton town centre

Accommodation

GROUND FLOOR

Entrance Hall

Lounge: 16'3 x 12'6 (4.96m x 3.81m)

Balcony

Kitchen: 9'9 x 6'1 (2.97m x 1.86m)

Bedroom 1: 12'4 x 9'11 (3.76m x 3.02m)

Bedroom 2: 13'0 x 7'2 (3.97m x 2.19m)

Bathroom

Separate Toilet

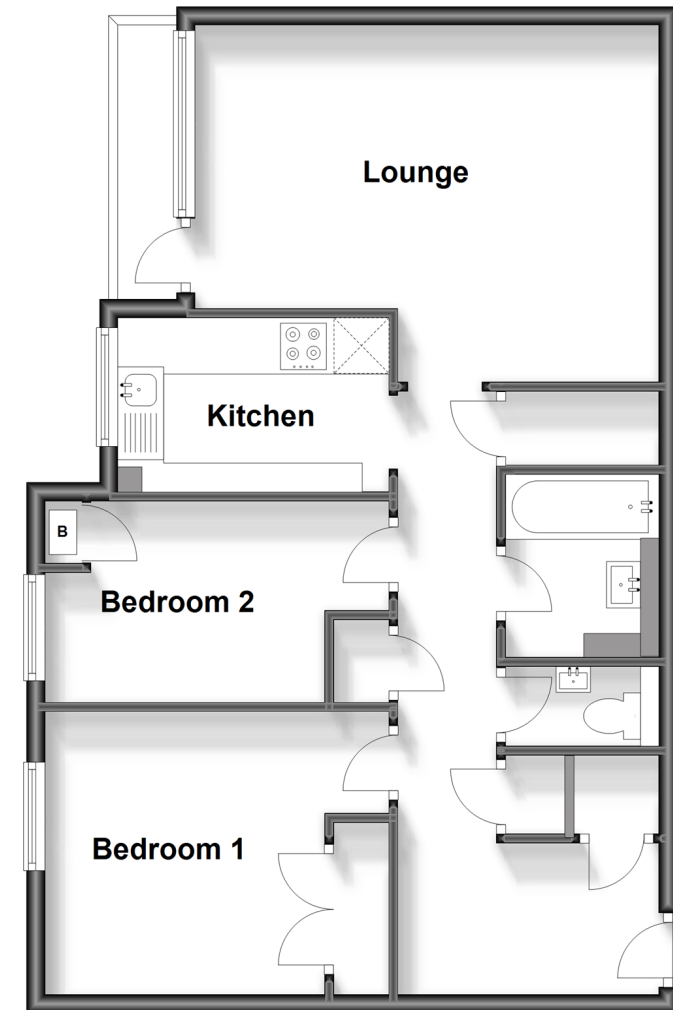
OUTSIDE

Communal Gardens

Garage

Ground Floor

Approx. 63.1 sq. metres (679.6 sq. feet)



Call Sutton - 020 8661 0330 ■ cubittandwest.co.uk

- A private rental licensing scheme applies to some properties in this area, please contact us before proceeding
- Legal advice should be taken to verify fixtures/fittings, planning, alterations and/or lease details
- Appliances & services are untested, dimensions are approximate and floor plans are not to scale
- Through a Homewise Home For Life Plan people aged 60+ can secure this property for up to 59% less, by purchasing a Lifetime Lease.



22017301/20231007/KWK/KWK