



Price

£110,000

Leasehold

1x  1x  1x 

**Forest Dene Court,
Cedar Road, Sutton,
Surrey, SM2**

cubitt&west
Helping you move forwards



Main features

- No onward chain to wait for
- South Sutton location
- Moments from Sutton station and High Street
- Lift service and warden assisted
- Residents permit parking and communal gardens
- Communal laundry room and residents lounge

Accommodation

THIRD FLOOR

Entrance Hall

Lounge : 17'6 x 10'1 (5.34m x 3.08m)

Kitchen : 7'5 x 6'1 (2.26m x 1.86m)

Bedroom: 14'3 x 8'7 (4.35m x 2.62m)

Bathroom: 7'0 x 5'5 (2.14m x 1.65m)

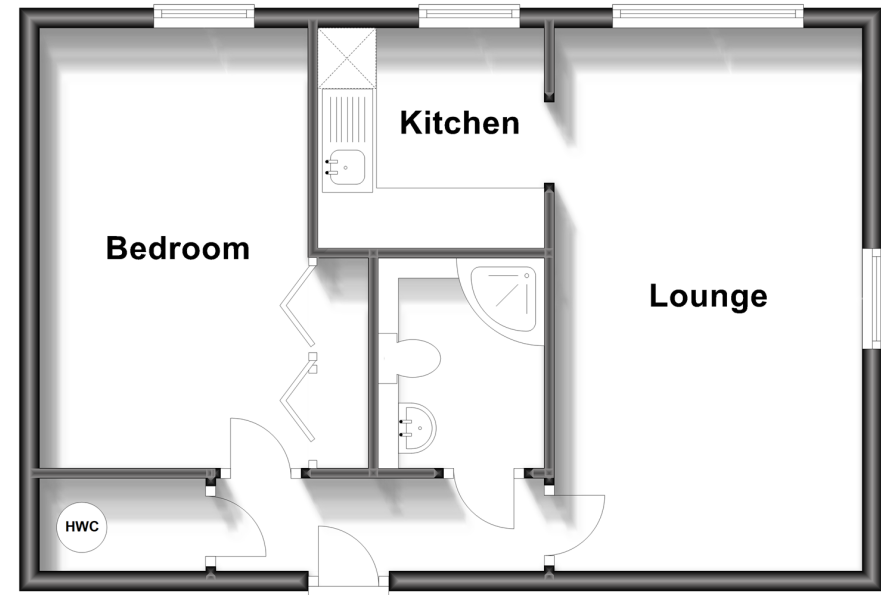
OUTSIDE

Communal Gardens

Residents Permit Parking

Third Floor

Approx. 44.2 sq. metres (476.1 sq. feet)



Call Sutton - 020 8661 0330 ■ cubittandwest.co.uk

■ A private rental licensing scheme applies to some properties in this area, please contact us before proceeding

■ Appliances & services are untested, dimensions are approximate and floor plans are not to scale

■ Legal advice should be taken to verify fixtures/fittings, planning, alterations and/or lease details



22017328/20231009/CR/KV