



OVER 60?

Secure this property
for up to **59% less!**

Price

£350,000

Leasehold

2x  2x  1x 

**Elysium House, Western
Road, Sutton, SM1**

cubitt&west
Helping you move forwards



Main features

- Modern well maintained building
- Spacious rooms throughout with both bedrooms doubles
- Bathroom and an en-suite shower room
- Well located for a choice of transport links
- Allocated off street parking

Accommodation

FIRST FLOOR

Entrance Hall

Lounge: 17'5 x 12'8 (5.31m x 3.86m)

Kitchen: 12'7 x 6'2 (3.84m x 1.88m)

Bedroom 1: 11'4 up to fitted wardrobes x 11'4 (3.46m x 3.46m)

En-Suite Shower Room

Bedroom 2: 11'0 x 8'9 up to fitted wardrobes (3.36m x 2.67m)

Bathroom

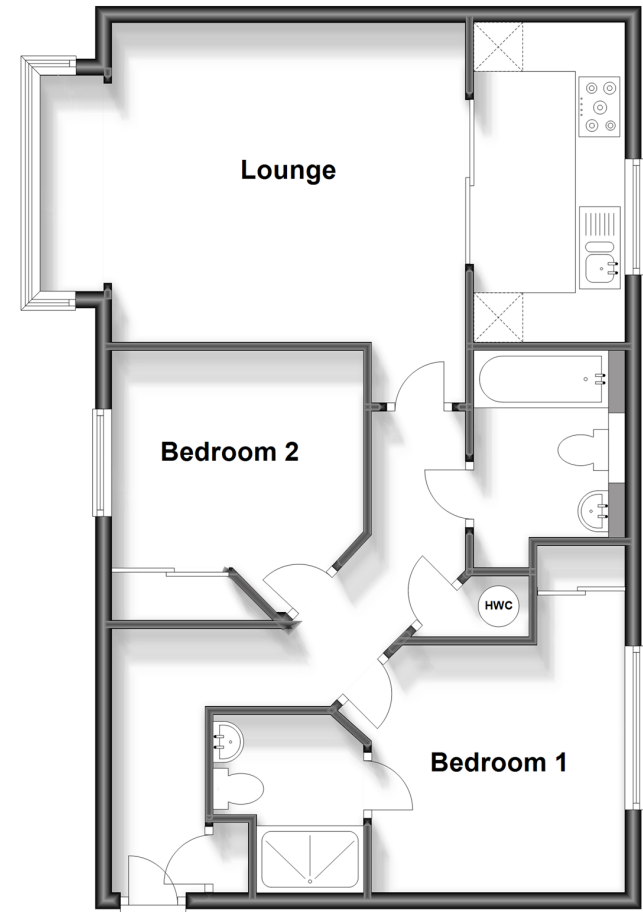
OUTSIDE

Allocated Parking

Communal Gardens

First Floor

Approx. 68.8 sq. metres (740.8 sq. feet)



Call Sutton - 020 8661 0330 ■ cubittandwest.co.uk

- A private rental licensing scheme applies to some properties in this area, please contact us before proceeding
- Legal advice should be taken to verify fixtures/fittings, planning, alterations and/or lease details
- Appliances & services are untested, dimensions are approximate and floor plans are not to scale
- Through a Homewise Home For Life Plan people aged 60+ can secure this property for up to 59% less, by purchasing a Lifetime Lease.



22017399/20230826/CR/KV