



Price
£375,000

Leasehold

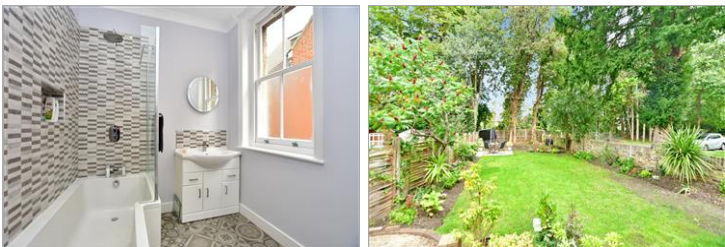
2x  1x  1x 

**Mulgrave Road, South
Sutton, Surrey, SM2**

OVER 60?

Secure this property
for up to **59% less!**

cubitt&west
Helping you move forwards



Main features

- Beautiful large conversion flat in fantastic condition
- Sought after location close to transport links
- Private rear garden and allocated off road parking
- Finished to a very high standard and ready to move in to
- Perfect for first time buyers

Accommodation

FIRST FLOOR

Entrance Hall

Lounge: 14'8 x 12'2 (4.47m x 3.71m)

Kitchen: 8'7 x 5'9 (2.62m x 1.75m)

Bedroom 1: 15'3 x 10'2 (4.65m x 3.10m)

Bedroom 2: 10'5 x 10'1 (3.18m x 3.08m)

Bathroom

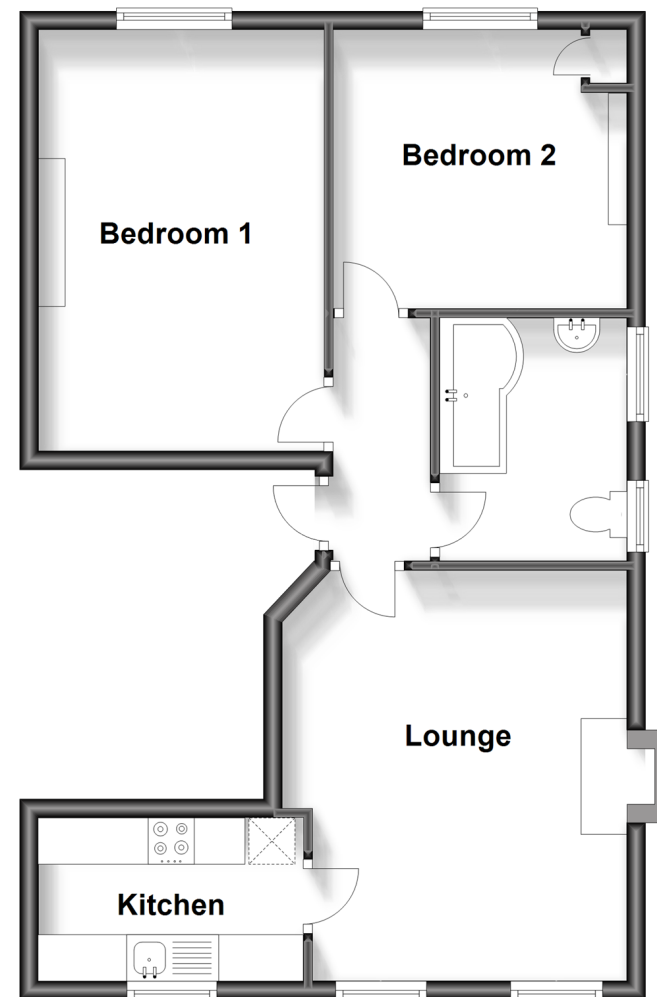
OUTSIDE

Allocated Parking Space

Private Garden

First Floor

Approx. 54.4 sq. metres (585.1 sq. feet)



Call Sutton - 020 8661 0330 ■ cubittandwest.co.uk

- A private rental licensing scheme applies to some properties in this area, please contact us before proceeding
- Legal advice should be taken to verify fixtures/fittings, planning, alterations and/or lease details
- Appliances & services are untested, dimensions are approximate and floor plans are not to scale
- Through a Homewise Home For Life Plan people aged 60+ can secure this property for up to 59% less, by purchasing a Lifetime Lease.