



Guide Price
£215,000

Leasehold

1x  1x  1x 

**Woodville House,
Brunswick Road, Sutton,
Surrey, SM1**

OVER 60?

Secure this property
for up to **59% less!**

cubitt&west
Helping you move forwards



Main features

- Refurbished bathroom
- Private balcony
- Walking distance to Sutton town centre
- Well located for both Sutton and Sutton Common stations
- Bright and spacious lounge

Accommodation

SECOND FLOOR

Entrance Hall

Lounge: 12'11 x 11'9 (3.94m x 3.58m)

Balcony

Kitchen: 12'0 x 5'6 (3.66m x 1.68m)

Bathroom: 5'9 x 5'5 (1.75m x 1.65m)

FIRST FLOOR

Bedroom : 13'1 x 8'7 (3.99m x 2.62m)

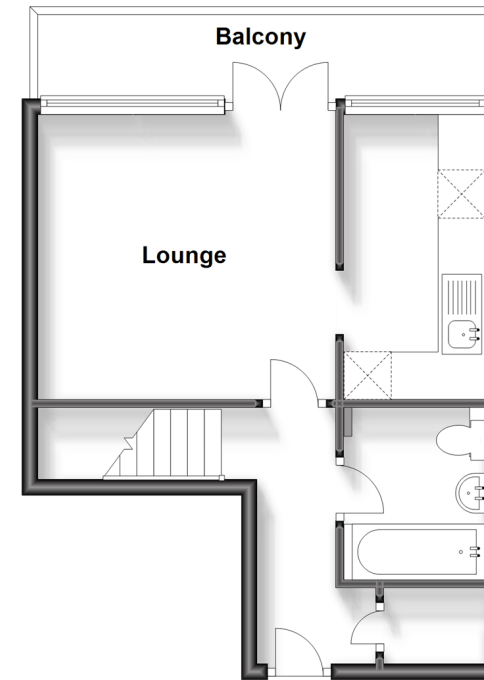
OUTSIDE

Residents Permit Parking

Communal Garden

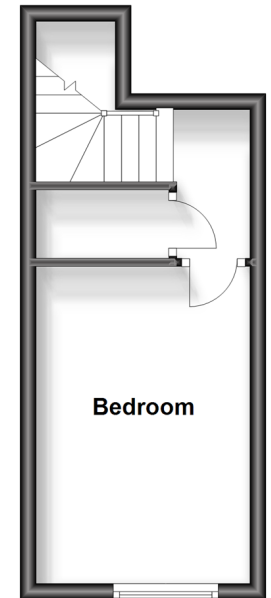
Second Floor

Approx. 32.5 sq. metres (349.4 sq. feet)



First Floor

approx. 17.1 sq. metres (184.4 sq. feet)



Call Sutton - 020 8661 0330 ■ cubittandwest.co.uk

- A private rental licensing scheme applies to some properties in this area, please contact us before proceeding
- Legal advice should be taken to verify fixtures/fittings, planning, alterations and/or lease details
- Appliances & services are untested, dimensions are approximate and floor plans are not to scale
- Through a Homewise Home For Life Plan people aged 60+ can secure this property for up to 59% less, by purchasing a Lifetime Lease.



22017411/20231111/CR/KV