



Price
£669,950

Freehold

3x  2x  2x 

**The Gallop, Sutton,
Surrey, SM2**

cubitt&west
Helping you move forwards



Main features

- No onward chain to wait for
- Garage and large sunny garden
- Plenty of potential to extend and improve (subject to planning permission)
- Characterful features throughout
- Walking distance to The Harris Academy

Accommodation

GROUND FLOOR

Entrance Hall

Lounge: 17'0 x 11'11 (5.19m x 3.63m)

Dining Room: 14'6 x 12'4 (4.42m x 3.76m)

Kitchen: 15'5 x 8'1 (4.70m x 2.47m)

Shower Room

FIRST FLOOR

Landing

Bedroom 1: 16'8 x 10'8 (5.08m x 3.25m)

Bedroom 2: 14'7 x 8'7 (4.45m x 2.62m)

Bedroom 3: 9'5 x 8'4 (2.87m x 2.54m)

Bathroom

Separate Toilet

OUTSIDE

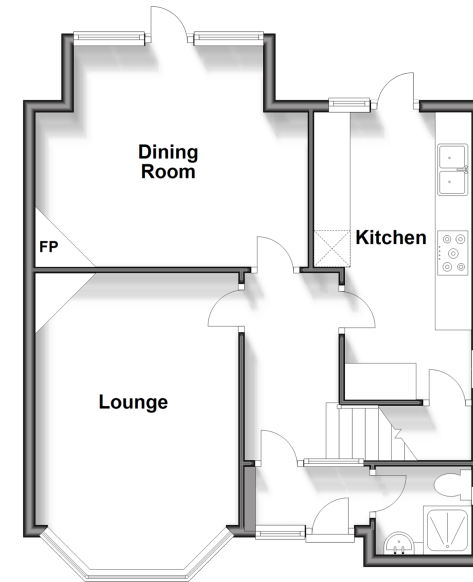
Front Garden

Garage

Rear Garden

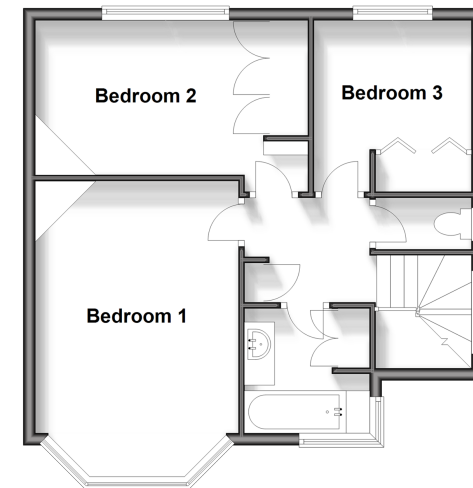
Ground Floor

Approx. 53.7 sq. metres (578.2 sq. feet)



First Floor

Approx. 47.7 sq. metres (513.5 sq. feet)



Call Sutton - 020 8661 0330 ■ cubittandwest.co.uk

- A private rental licensing scheme applies to some properties in this area, please contact us before proceeding
- Legal advice should be taken to verify fixtures/fittings, planning, alterations and/or lease details
- Appliances & services are untested, dimensions are approximate and floor plans are not to scale



22017482/20240405/CR/KWK