



Price
£2,750,000

Freehold

5x  3x  4x 

**The Drive, South Cheam,
Surrey, SM2**

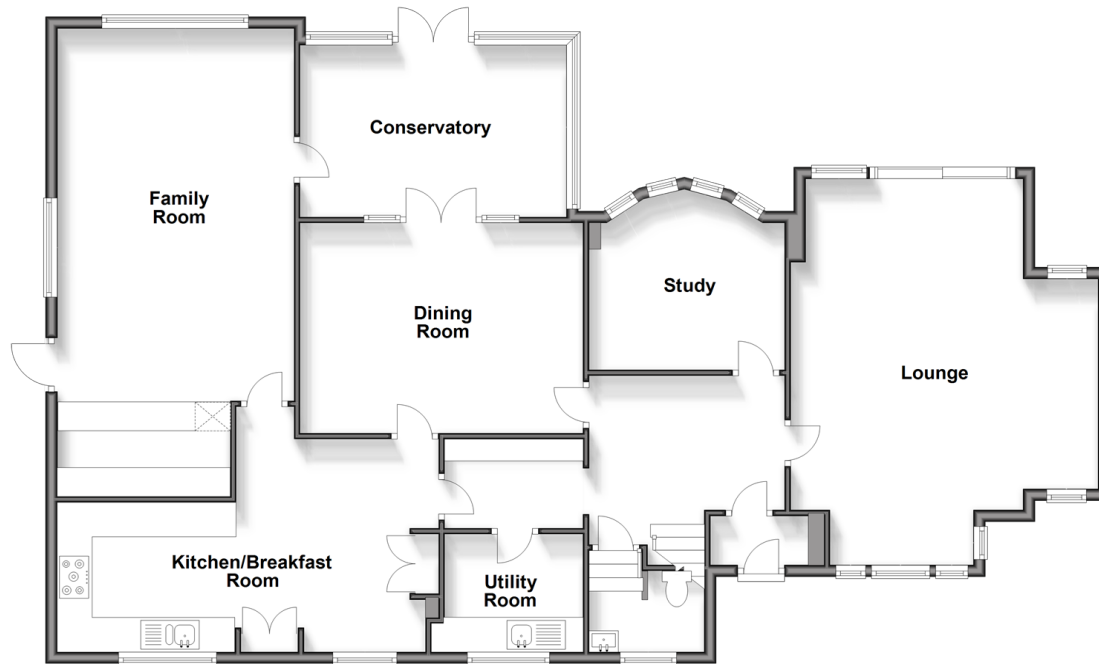
OVER 60?

Secure this property
for up to **59% less!**

cubitt&west
Helping you move forwards

Ground Floor

Approx. 150.2 sq. metres (1616.9 sq. feet)



First Floor

Approx. 122.2 sq. metres (1315.5 sq. feet)



Accommodation

GROUND FLOOR

Entrance Porch

Entrance Hall

Lounge: 22'5 maximum x 17'1 maximum
(6.84m x 5.21m)

Dining Room: 16'1 x 11'10 (4.91m x 3.61m)

Family Room: 26'5 maximum x 13'2 (8.06m x 4.02m)

Kitchen/Breakfast Room: 22'2 x 13'6 (6.76m x 4.12m)

Utility Room: 8'4 x 6'6 (2.54m x 1.98m)

Study: 10'10 x 10'4 (3.30m x 3.15m)

Conservatory: 14'8 x 9'7 (4.47m x 2.92m)

Cloakroom

FIRST FLOOR

Landing

Bedroom 1: 14'5 x 14'1 maximum (4.40m x 4.30m)

En-Suite Shower Room

Bedroom 2: 16'1 x 12'1 (4.91m x 3.69m)

Bedroom 3: 14'8 x 13'4 (4.47m x 4.07m)

Bedroom 4: 13'2 x 11'3 (4.02m x 3.43m)

Bedroom 5

Shower Room

Bathroom

OUTSIDE

Detached Garage

Driveway

Rear Garden

Swimming Pool



Main features

- Undoubtedly the most sought after Private Road in the London Borough of Sutton
- Substantial family home with large grounds & a swimming pool
- Detached garage & extensive driveway
- Gardens backing onto Cuddington Golf Club
- Remarkable opportunity refurbish or to completely redevelop



Nearest Schools

Primary Schools: Avenue Primary 0.6 miles, Banstead Co-ed Preparatory School 0.8 miles, Cuddington Croft Primary 1.0 miles
Secondary Schools: The Harris Academy 0.9 miles, Overton Grange School 1.1 miles, Nonsuch High School



Transport Information

Train Stations: Belmont 0.5 miles, Banstead 0.6 miles, Cheam 1.2 miles



Address

The Drive, South Cheam, Surrey, SM2



Directions

For directions to this property please contact us.



cubitt&west
Helping you move forwards

Call Sutton Branch 020 8661 0330 ■ [cubittandwest.co.uk](https://www.cubittandwest.co.uk)



- A private rental licensing scheme applies to some properties in this area, please contact us before proceeding
- Appliances & services are untested, dimensions are approximate and floor plans are not to scale

- Legal advice should be taken to verify fixtures/fittings, planning, alterations and/or lease details
- Through a Homewise Home For Life Plan people aged 60+ can secure this property for up to 59% less, by purchasing a Lifetime Lease.



22017551/20240226/KWK/KWK