



Price

£350,000

Leasehold

1x  1x  1x 

**Cheam Common Road,
Worcester Park, Surrey,
KT4**

OVER 60?

Secure this property
for up to **59% less!**

cubitt&west
Helping you move forwards



Main features

- **Luxury home within an intimate block of just three apartments**
- **Allocated parking space & plenty of accessible parking close by**
- **Walking distance to Worcester Park High Street & Station**
- **New Build Warrantee still in place for another 5 years**
- **Immaculately presented**

Accommodation

SECOND FLOOR

Entrance Hall

Lounge: 14'10 maximum x 12'9 maximum (4.52m x 3.89m)

Kitchen: 15'5 maximum x 8'8 maximum (4.70m x 2.64m)

Bedroom : 11'9 x 10'9 (3.58m x 3.28m)

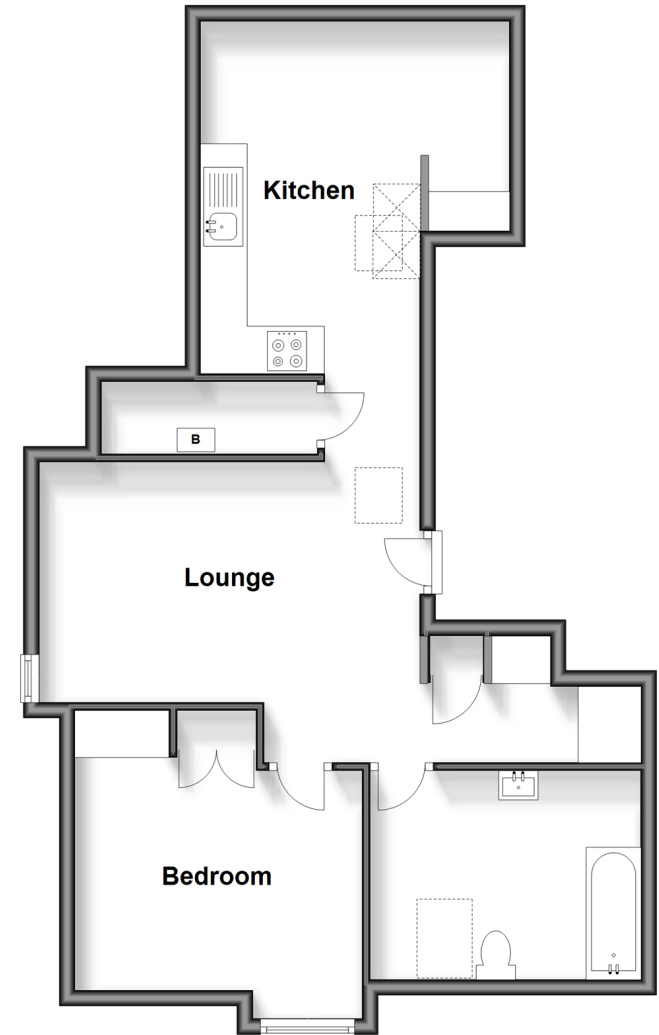
Bathroom: 11'2 x 9'3 (3.41m x 2.82m)

OUTSIDE

Allocated Parking

Second Floor

Approx. 62.7 sq. metres (675.2 sq. feet)



Call Sutton - 020 8661 0330 ■ cubittandwest.co.uk

- A private rental licensing scheme applies to some properties in this area, please contact us before proceeding
- Legal advice should be taken to verify fixtures/fittings, planning, alterations and/or lease details
- Appliances & services are untested, dimensions are approximate and floor plans are not to scale
- Through a Homewise Home For Life Plan people aged 60+ can secure this property for up to 59% less, by purchasing a Lifetime Lease.



22017570/20240316/CR/KWK