



Price
£250,000

**Share of
Freehold**

1x  1x  1x 

**Cramhurst House,
Sutton Grove, Sutton,
Surrey, SM1**

OVER 60?

Secure this property
for up to **59% less!**

cubitt&west
Helping you move forwards



Main features

- No onward chain to wait for
- 951 years remaining on the lease and a share of the freehold
- Allocated parking space & accessible parking close by for visitors
- Walking distance to Sutton town centre & station
- Excellent bus links close by taking you to the Northern Line

Accommodation

SECOND FLOOR

Entrance Hall

Lounge: 16'3 x 10'3 (4.96m x 3.13m)

Kitchen: 10'0 x 7'3 (3.05m x 2.21m)

Bedroom : 14'6 x 10'3 (4.42m x 3.13m)

Bathroom

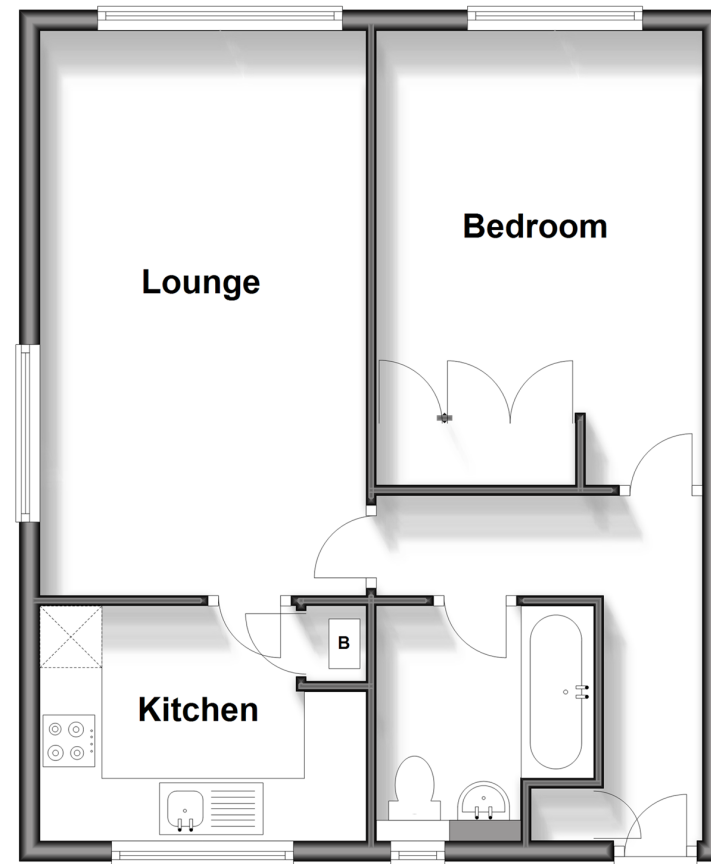
OUTSIDE

Allocated Parking

Communal Gardens

Second Floor

Approx. 50.1 sq. metres (539.2 sq. feet)



Call Sutton - 020 8661 0330 ■ cubittandwest.co.uk

- A private rental licensing scheme applies to some properties in this area, please contact us before proceeding
- Legal advice should be taken to verify fixtures/fittings, planning, alterations and/or lease details
- Appliances & services are untested, dimensions are approximate and floor plans are not to scale
- Through a Homewise Home For Life Plan people aged 60+ can secure this property for up to 59% less, by purchasing a Lifetime Lease.

