



**Price**

**£240,000**

**Leasehold**

1x  1x  1x 

**Heron Way, Wallington,  
Surrey, SM6**

**OVER 60?**

Secure this property  
for up to **59% less!**

**cubitt&west**  
Helping you move forwards





## Main features

- Ground floor apartment situated in a quiet and peaceful location
- Within easy reach of Wallington high street and train station
- Large lounge which is open-plan to the kitchen
- Allocated parking space
- Private rear garden

## Accommodation

### GROUND FLOOR

Entrance Hall

Lounge: 16'0 x 11'7 (4.88m x 3.53m)

Kitchen: 9'4 x 5'5 (2.85m x 1.65m)

Bedroom 1: 11'4 x 10'11 (3.46m x 3.33m)

Bathroom

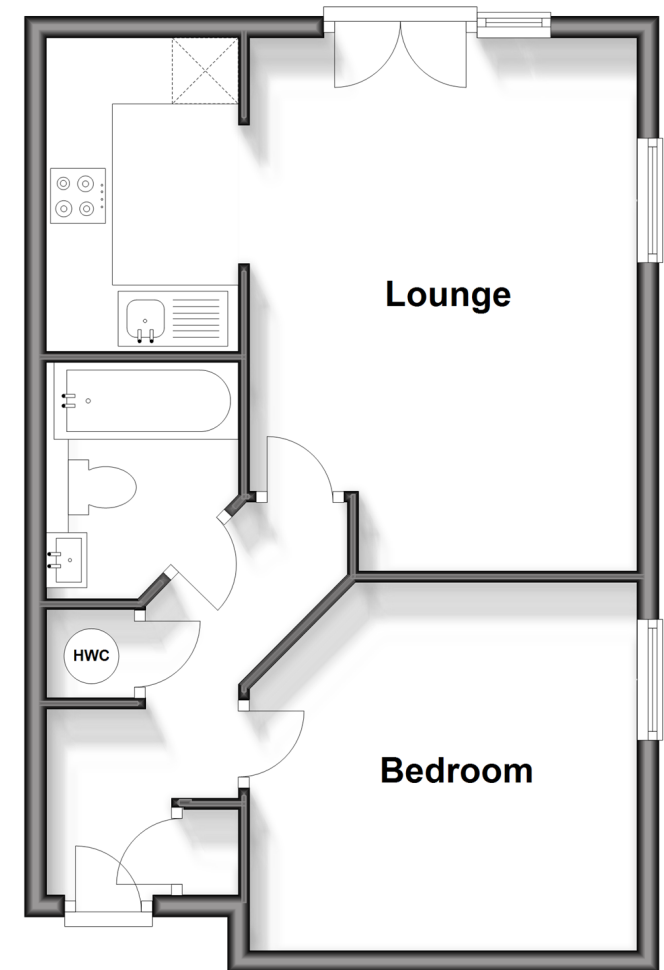
### OUTSIDE

Allocated Parking

Rear Garden

## Ground Floor

Approx. 43.8 sq. metres (471.5 sq. feet)



**Call Wallington - 020 8647 0011 ■ [cubittandwest.co.uk](http://cubittandwest.co.uk)**

- A private rental licensing scheme applies to some properties in this area, please contact us before proceeding
- Legal advice should be taken to verify fixtures/fittings, planning, alterations and/or lease details
- Appliances & services are untested, dimensions are approximate and floor plans are not to scale
- Through a Homewise Home For Life Plan people aged 60+ can secure this property for up to 59% less, by purchasing a Lifetime Lease.



22112769/20240424/LJ/DK