



Price

£650,000

Freehold

4x  2x  1x 

**The Chase, Wallington,
Surrey, SM6**

OVER 60?

Secure this property
for up to **59% less!**

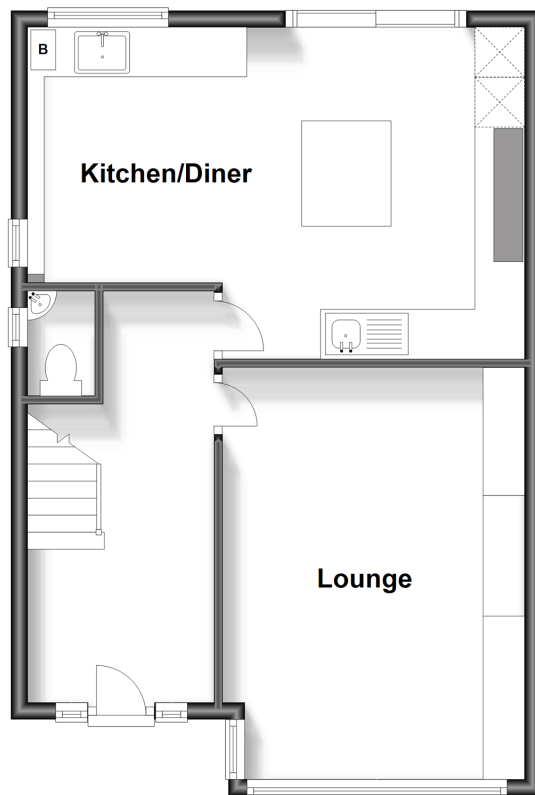


Video Tour available

cubitt&west
Helping you move forwards

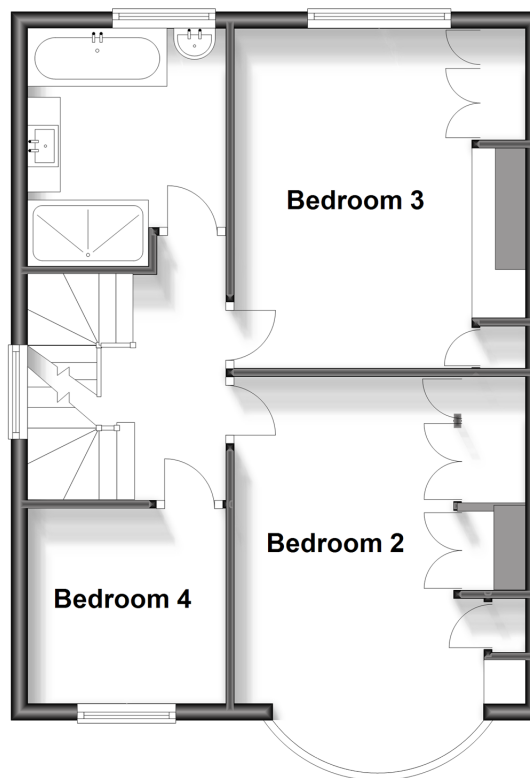
Ground Floor

Approx. 51.8 sq. metres (557.9 sq. feet)



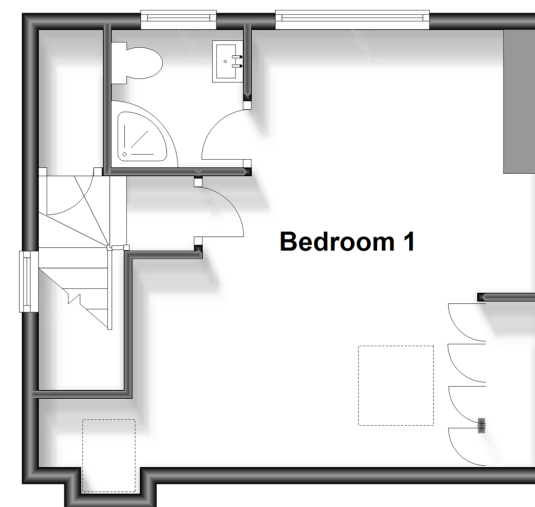
First Floor

Approx. 49.2 sq. metres (529.5 sq. feet)



Second Floor

Approx. 31.8 sq. metres (342.1 sq. feet)



Accommodation

GROUND FLOOR

Entrance Hall: 17'2 x 7'5 (5.24m x 2.26m)

Lounge : 16'5 x 11'2 (5.01m x 3.41m)

W/C

Kitchen/Breakfast Room: 18'9 x 13'3 (5.72m x 4.04m)

FIRST FLOOR

Bedroom 2: 15'5 into bay x 9'5 (4.70m x 2.87m)

Bedroom 3: 13'1 x 10'5 (3.99m x 3.18m)

Bedroom 4: 8'4 x 7'6 (2.54m x 2.29m)

Family Bathroom: 9'7 x 7'7 (2.92m x 2.31m)

SECOND FLOOR

Bedroom 1: 17'1 into eaves x 16'1 maximum (5.21m x 4.91m)

En-suite Shower Room: 5'9 x 5'2 (1.75m x 1.58m)

OUTSIDE

Driveway

Rear Garden

Garage



Main features

- Four bedroom semi-detached family home arranged over three floors
- Spacious rooms and plenty of original features throughout
- Master bedroom with en-suite shower room
- Within close proximity to local primary and secondary schools
- Driveway and rear garden



Nearest Schools

Primary Schools: High View Primary 0.1 miles, St Elphege's RC Junior School 0.4 miles, Foresters Primary 0.5 miles

Secondary Schools: Wilson's School 0.2 miles, Link



Transport Information

Train Stations: Waddon 0.7 miles, Wallington 1.0 miles, South Croydon 1.3 miles
Underground Morden 4.0 miles, Colliers Wood 4.4 miles, South Wimbledon 4.6 miles



Address

The Chase, Wallington, Surrey, SM6



Directions

For directions to this property please contact us.



cubitt&west
Helping you move forwards

Call Wallington Branch 020 8647 0011 ■ cubittandwest.co.uk



- A private rental licensing scheme applies to some properties in this area, please contact us before proceeding
- Appliances & services are untested, dimensions are approximate and floor plans are not to scale

- Legal advice should be taken to verify fixtures/fittings, planning, alterations and/or lease details
- Through a Homewise Home For Life Plan people aged 60+ can secure this property for up to 59% less, by purchasing a Lifetime Lease.



22113577/20230829/JC/DK