



**Price**  
**£235,000**

**Leasehold**

1x  1x  1x 

**Chailey Court, Mortlake  
Close, Croydon, Surrey,  
CR0**

**OVER 60?**

Secure this property  
for up to **59% less!**

**cubitt&west**  
Helping you move forwards





## Main features

- Well-presented apartment with long lease
- Situated in close proximity to local transport including Waddon train station
- Walking distance to Beddington Park
- Opportunity to put your own stamp on the property
- Perfect for a first time purchase or investment

## Accommodation

### FIRST FLOOR

Entrance Hall

Living Room: 13'8 x 10'0 (4.17m x 3.05m)

Kitchen: 9'3 x 7'8 (2.82m x 2.34m)

Bedroom : 11'0 x 9'8 (3.36m x 2.95m)

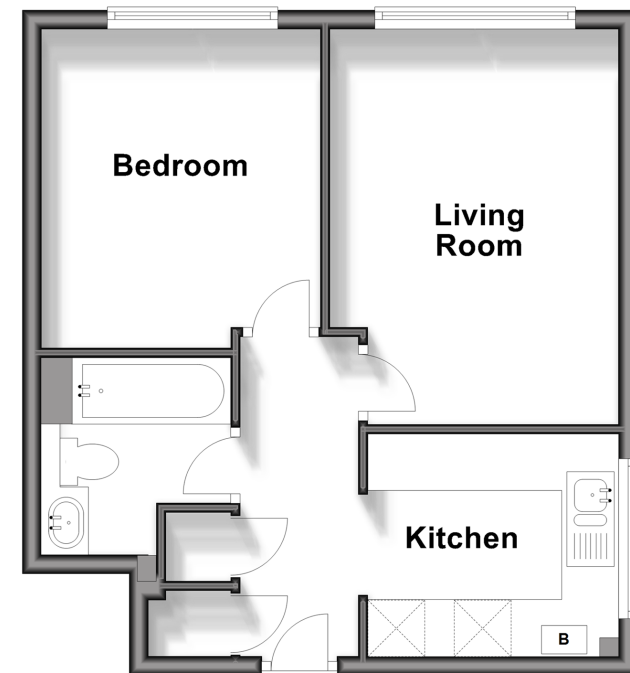
Bathroom: 6'10 x 6'9 (2.08m x 2.06m)

### OUTSIDE

Communal Gardens

## First Floor

Approx. 39.2 sq. metres (421.5 sq. feet)



Call Wallington - 020 8647 0011 ■ [cubittandwest.co.uk](http://cubittandwest.co.uk)

- A private rental licensing scheme applies to some properties in this area, please contact us before proceeding
- Appliances & services are untested, dimensions are approximate and floor plans are not to scale

- Legal advice should be taken to verify fixtures/fittings, planning, alterations and/or lease details
- Through a Homewise Home For Life Plan people aged 60+ can secure this property for up to 59% less, by purchasing a Lifetime Lease.