



Price
£300,000

Leasehold

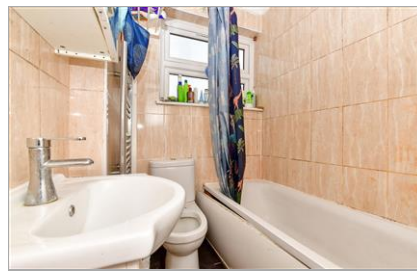
2x  1x  1x 

**Green Wrythe Lane,
Carshalton, Surrey, SM5**

OVER 60?

Secure this property
for up to **59% less!**

cubitt&west
Helping you move forwards



Main features

- **Spacious first floor maisonette ideal for first time buyers or investors**
- **Private rear garden**
- **Garage and off-road parking**
- **Loft space**
- **Good location close to transport links and local amenities**

Accommodation

FIRST FLOOR

Entrance Hall

Lounge: 13'4 x 10'11 (4.07m x 3.33m)

Kitchen: 7'2 x 6'4 (2.19m x 1.93m)

Bedroom 1: 10'6 x 9'9 (3.20m x 2.97m)

Bedroom 2: 9'5 x 9'2 (2.87m x 2.80m)

Bathroom

SECOND FLOOR

Loft: 12'5 x 9'6 (3.79m x 2.90m)

OUTSIDE

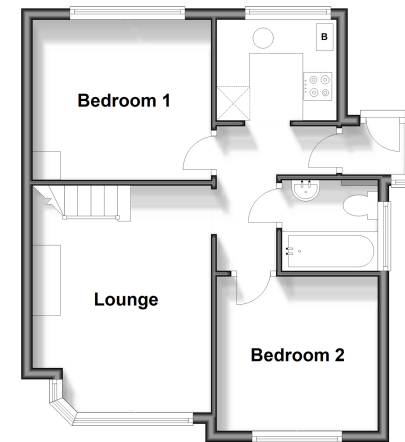
Off-Road Parking

Rear Garden

Garage

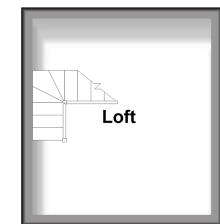
First Floor

Approx. 42.5 sq. metres (457.8 sq. feet)



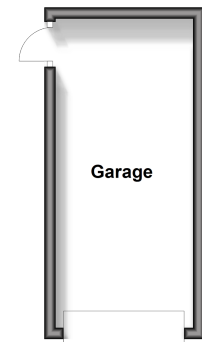
Second Floor

Approx. 11.1 sq. metres (119.6 sq. feet)



Outbuilding

Approx. 13.5 sq. metres (145.0 sq. feet)



Call Wallington - 020 8647 0011 ■ cubittandwest.co.uk

- A private rental licensing scheme applies to some properties in this area, please contact us before proceeding
- Appliances & services are untested, dimensions are approximate and floor plans are not to scale

- Legal advice should be taken to verify fixtures/fittings, planning, alterations and/or lease details
- Through a Homewise Home For Life Plan people aged 60+ can secure this property for up to 59% less, by purchasing a Lifetime Lease.