



Price
£100,000

Leasehold

1x  1x  1x 

**Lewes Court,
Chatsworth Place,
Mitcham, Surrey, CR4**



Video Tour available

cubitt&west
Helping you move forwards



Main features

- One bedroom 1st floor apartment
- 70% shared ownership
- Communal lounge, parking, gardens and laundry room
- New lease on completion - 99 years remaining
- Located close to Mitcham town centre, common and station

Accommodation

FIRST FLOOR

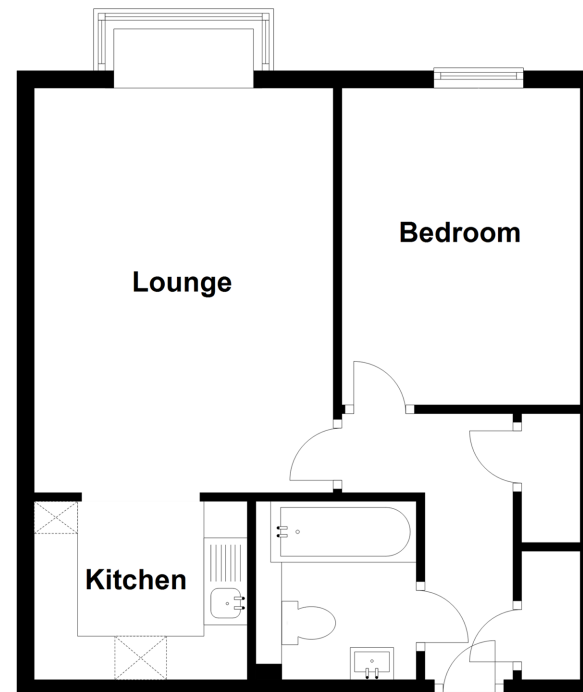
Entrance Hall
 Lounge/Dining Room : 15'7 x 11'1 (4.75m x 3.38m)
 Kitchen: 7'9 into fitted units x 6'8 (2.36m x 2.03m)
 Bedroom: 11'9 x 9'1 (3.58m x 2.77m)
 Bathroom: 6'8 x 5'9 (2.03m x 1.75m)
 Communal Laundry Room
 Communal Lounge
 Guest Suite

OUTSIDE

Communal Gardens

First Floor

Approx. 43.4 sq. metres (467.0 sq. feet)



Call Wallington - 020 8647 0011 ■ cubittandwest.co.uk

■ A private rental licensing scheme applies to some properties in this area, please contact us before proceeding

■ Appliances & services are untested, dimensions are approximate and floor plans are not to scale

■ Legal advice should be taken to verify fixtures/fittings, planning, alterations and/or lease details



22116702/20240417/DC/JA