



Guide Price
£485,000

Freehold

4x  1x  1x 

**Abbotts Road, Mitcham,
Surrey, CR4**

OVER 60?

Secure this property
for up to **59% less!**

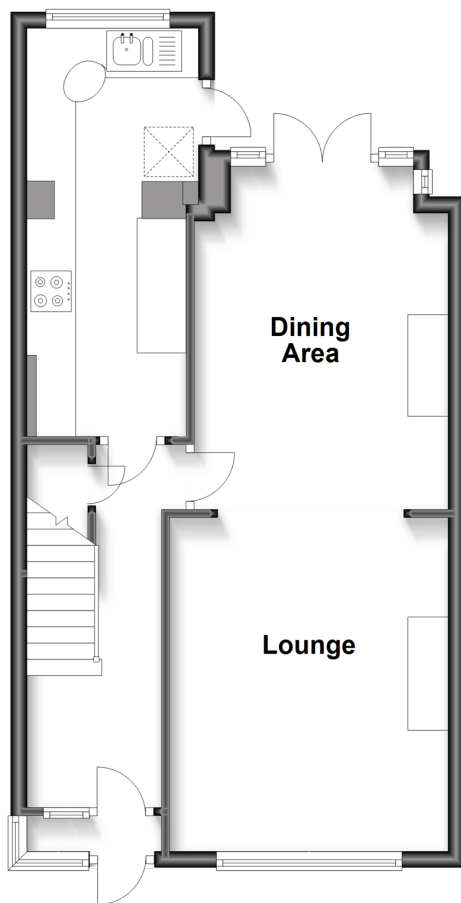


Video Tour available

cubitt&west
Helping you move forwards

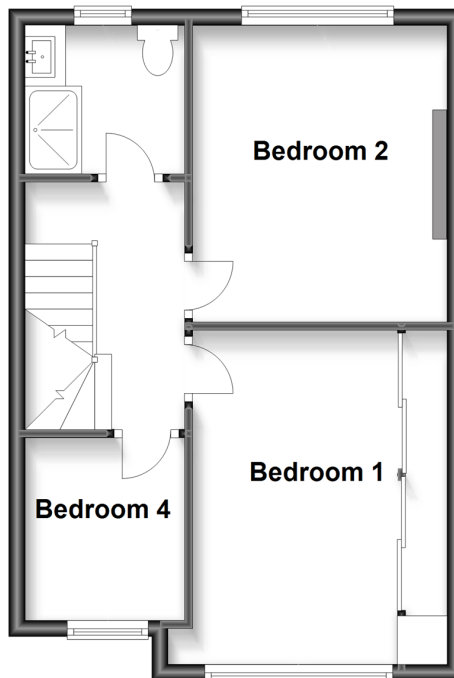
Ground Floor

Approx. 47.0 sq. metres (506.2 sq. feet)



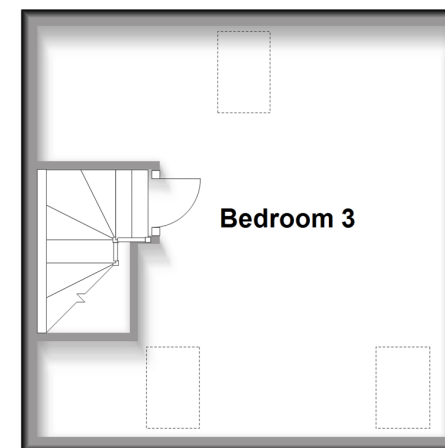
First Floor

Approx. 40.0 sq. metres (430.3 sq. feet)



Second Floor

Approx. 25.5 sq. metres (274.8 sq. feet)



Accommodation

GROUND FLOOR

Entrance Porch

Entrance Hall: 15'1 x 5'8 (4.60m x 1.73m)

Kitchen : 16'8 x 6'5 (5.08m x 1.96m)

Lounge: 13'2 x 11'7 (4.02m x 3.53m)

Dining Area : 15'4 x 10'8 (4.68m x 3.25m)

FIRST FLOOR

Landing

Bedroom 1: 13'7 x 8'6 (4.14m x 2.59m)

Bedroom 2: 12'4 x 11'1 (3.76m x 3.38m)

Bedroom 4: 7'6 x 6'5 (2.29m x 1.96m)

Shower Room: 6'4 x 6'1 (1.93m x 1.86m)

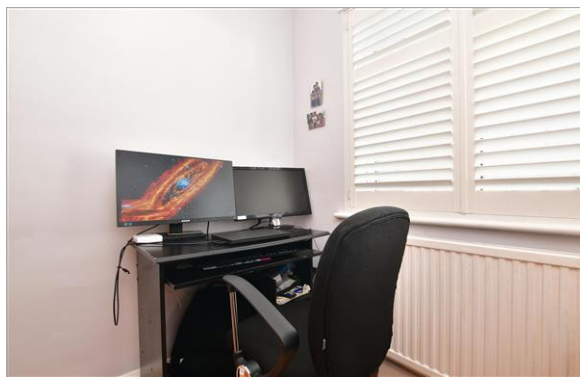
SECOND FLOOR

Bedroom 3: 16'7 maximum x 16'0 into eaves
(5.06m x 4.88m)

OUTSIDE

Garage

Rear Garden



Main features

- End of terrace family home arranged over three floors
- Offering spacious accommodation throughout
- Situated in a popular residential road located close to local amenities
- Rear and front garden & garage
- Large bright and open plan lounge and dining room



Nearest Schools

Primary Schools: The Sherwood School 0.1 miles, Garden Primary 0.1 miles, William Morris Primary 0.3 miles

Secondary Schools: Harris Academy Merton 0.2 miles, St Marks C of E Academy 0.7 miles



Transport Information

Train Stations: Mitcham Eastfields 0.8 miles, Mitcham Junction 0.8 miles, Norbury 1.1 miles



Address

Abbotts Road, Mitcham, Surrey, CR4



Directions

For directions to this property please contact us.



cubitt&west
Helping you move forwards

Call Wallington Branch 020 8647 0011 ■ cubittandwest.co.uk



- A private rental licensing scheme applies to some properties in this area, please contact us before proceeding
- Appliances & services are untested, dimensions are approximate and floor plans are not to scale

- Legal advice should be taken to verify fixtures/fittings, planning, alterations and/or lease details
- Through a Homewise Home For Life Plan people aged 60+ can secure this property for up to 59% less, by purchasing a Lifetime Lease.



22117015/20240206/GG/DK