



**Price**

**£180,000**

**Leasehold**

1x  1x  1x 

**Marlborough Court,  
Cranley Gardens,  
Wallington, Surrey, SM6**



**Video Tour available**

**cubitt&west**  
Helping you move forwards



## Main features

- Larger than average apartment in excellent decorative order
- Recently modernised throughout
- Situated in a popular retirement block available to 60s and over
- On site development manager and apello care alarm system installed
- Newly fitted Carpet, kitchen and shower room
- Communal lounge, lift service and laundry room
- Within easy reach of local amenities and transport links

## Accommodation

### SECOND FLOOR

**Entrance Hall:** 8'2 x 7'2 maximum (2.49m x 2.19m)

**Lounge:** 21'3 x 10'4 (6.48m x 3.15m)

**Kitchen:** 7'6 x 6'9 (2.29m x 2.06m)

**Bedroom :** 17'2 x 10'5 (5.24m x 3.18m)

**Shower Room:** 6'8 x 6'4 (2.03m x 1.93m)

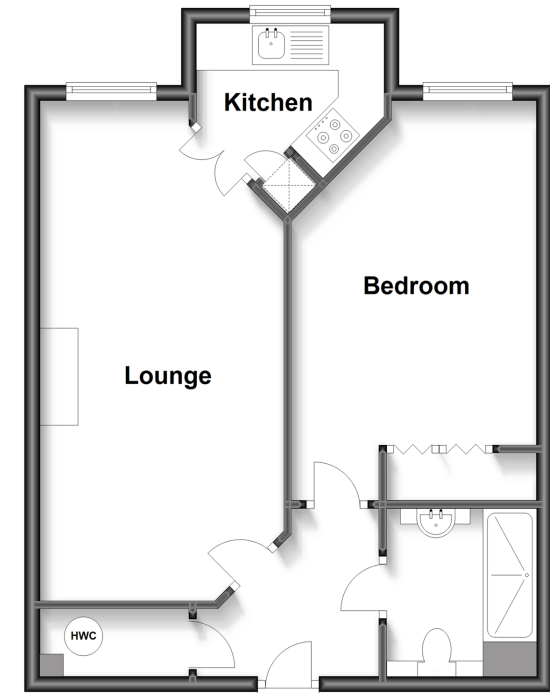
### OUTSIDE

**Residents Parking**

**Communal Gardens**

### Second Floor

Approx. 50.6 sq. metres (544.4 sq. feet)



**Call Wallington - 020 8647 0011 ■ [cubittandwest.co.uk](http://cubittandwest.co.uk)**

■ A private rental licensing scheme applies to some properties in this area, please contact us before proceeding

■ Appliances & services are untested, dimensions are approximate and floor plans are not to scale

■ Legal advice should be taken to verify fixtures/fitings, planning, alterations and/or lease details



22117019/20221031/JC/DK