



Guide Price

£850,000

Freehold

5x  2x  2x 

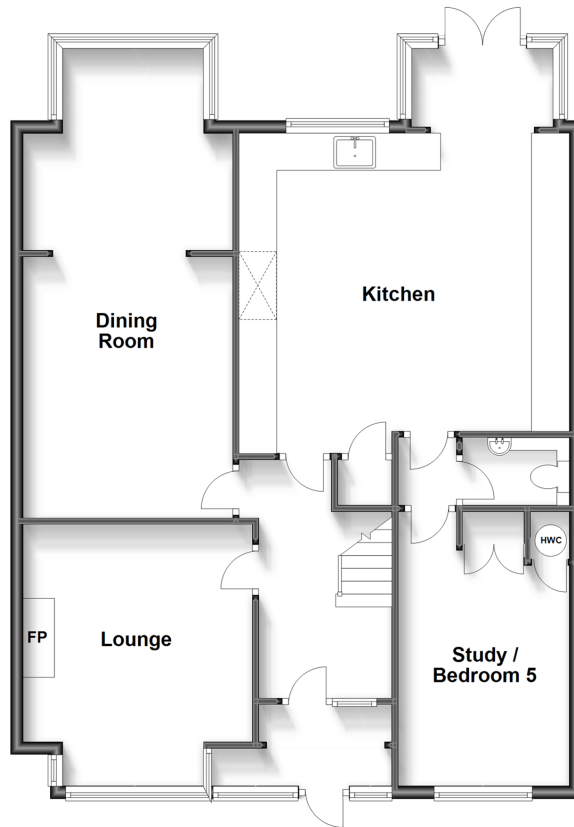
**Pine Ridge, Carshalton,
Surrey, SM5**

OVER 60?

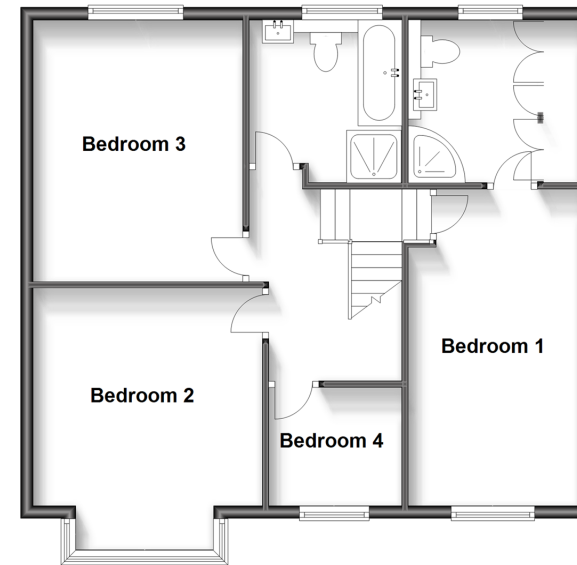
Secure this property
for up to **59% less!**

cubitt&west
Helping you move forwards

Ground Floor
Approx. 95.5 sq. metres (1027.7 sq. feet)



First Floor
Approx. 68.5 sq. metres (737.2 sq. feet)



Accommodation

GROUND FLOOR

Porch

Entrance Hall

Lounge: 14'1 x 12'2 (4.30m x 3.71m)

Dining Room: 25'7 x 10'2 (7.80m x 3.10m)

Conservatory: 8'9 x 4'4 (2.67m x 1.32m)

Kitchen: 16'7 x 15'4 (5.06m x 4.68m)

Cloakroom

Study/Bedroom 5: 12'7 x 8'6 (3.84m x 2.59m)

FIRST FLOOR

Landing

Bedroom 1: 16'1 x 8'9 (4.91m x 2.67m)

En-Suite Shower Room

Bedroom 2: 14'4 x 12'5 (4.37m x 3.79m)

Bedroom 3: 11'1 x 10'2 (3.38m x 3.10m)

Bedroom 4: 8'6 x 6'2 (2.59m x 1.88m)

Bathroom

OUTSIDE

Driveway

Rear Garden

Front Garden



Main features

- Driveway and extensive rear garden
- Spacious living spread across multiple reception rooms
- Brick built workshop with electricity
- Popular residential area benefiting from excellent local schools
- En-suite and cloakroom



Nearest Schools

Primary Schools: Stanley Park Junior School 0.3 miles, Barrow Hedges Primary 0.7 miles, Bandon Hill Primary 1.0 miles
Secondary Schools: Stanley Park High School 0.3 miles, Wallington High School for Girls 0.4 miles



Transport Information

Train Stations: Carshalton Beeches 0.6 miles, Wallington 0.8 miles, Carshalton 1.4 miles



Address

Pine Ridge, Carshalton, Surrey, SM5



Directions

For directions to this property please contact us.



cubitt&west
Helping you move forwards

Call Wallington Branch 020 8647 0011 ■ cubittandwest.co.uk



- A private rental licensing scheme applies to some properties in this area, please contact us before proceeding
- Appliances & services are untested, dimensions are approximate and floor plans are not to scale

- Legal advice should be taken to verify fixtures/fittings, planning, alterations and/or lease details
- Through a Homewise Home For Life Plan people aged 60+ can secure this property for up to 59% less, by purchasing a Lifetime Lease.



22117043/20230823/JC/LB