



Price

£750,000

Freehold

4x  2x  2x 

**Foresters Drive,
Wallington, Surrey, SM6**

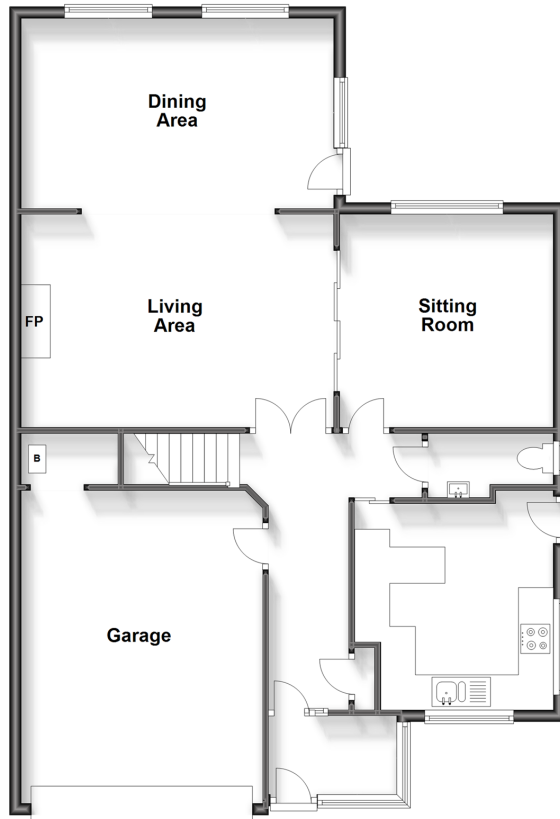
OVER 60?

Secure this property
for up to **59% less!**

cubitt&west
Helping you move forwards

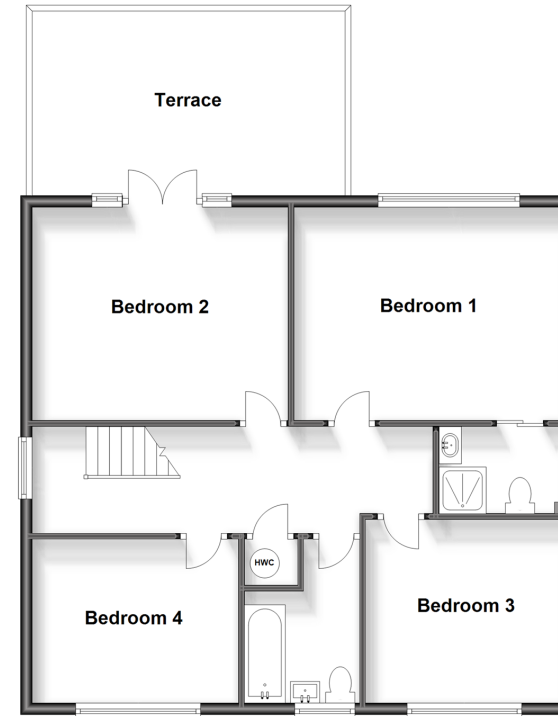
Ground Floor

Approx. 105.0 sq. metres (1130.6 sq. feet)



First Floor

Approx. 77.0 sq. metres (828.6 sq. feet)



Accommodation

GROUND FLOOR

Porch
 Entrance Hall: 16'2 x 4'4 (4.93m x 1.32m)
 Kitchen: 13'2 x 11'4 (4.02m x 3.46m)
 Cloakroom
 Sitting Room: 12'2 x 12'0 (3.71m x 3.66m)
 Living Area : 17'6 x 12'2 (5.34m x 3.71m)
 Dining Area : 18'0 x 11'1 (5.49m x 3.38m)

FIRST FLOOR

Landing
 Bedroom 1: 15'4 x 12'7 (4.68m x 3.84m)
 En-Suite Shower Room: 7'7 x 5'0 (2.31m x 1.53m)
 Bedroom 2: 14'2 x 11'9 (4.32m x 3.58m)
 Terrace
 Bedroom 3: 10'9 x 10'2 (3.28m x 3.10m)
 Bedroom 4: 11'7 x 9'3 (3.53m x 2.82m)
 Family Bathroom: 9'8 x 6'9 (2.95m x 2.06m)

OUTSIDE

Integral Double Garage
 Driveway
 Front and Rear Garden



Main features

- Four double bedroom detached house situated close to a number of schools
- Set back on one of Wallington's premier roads
- Perfect opportunity for you to put your own stamp on the property
- Private balcony overlooking a beautiful well maintained rear garden
- Double garage and driveway



Nearest Schools

Primary Schools: Amy Johnson Primary 0.3 miles, Margaret Roper Catholic Primary 0.4 miles, St Elphege's RC Junior School 0.5 miles

Secondary Schools: The John Fisher School 0.2 miles,



Transport Information

Train Stations: Purley 0.9 miles, Wallington 1.2 miles, Purley Oaks 1.2 miles
Underground Morden 4.7 miles, Colliers Wood 5.2 miles, South Wimbledon 5.3 miles



Address

Foresters Drive, Wallington, Surrey, SM6



Directions

For directions to this property please contact us.



cubitt&west
Helping you move forwards

Call Wallington Branch 020 8647 0011 ■ cubittandwest.co.uk



- A private rental licensing scheme applies to some properties in this area, please contact us before proceeding
- Appliances & services are untested, dimensions are approximate and floor plans are not to scale

- Legal advice should be taken to verify fixtures/fittings, planning, alterations and/or lease details
- Through a Homewise Home For Life Plan people aged 60+ can secure this property for up to 59% less, by purchasing a Lifetime Lease.



22117239/20231014/JC/DK