



Guide Price
£450,000

Freehold

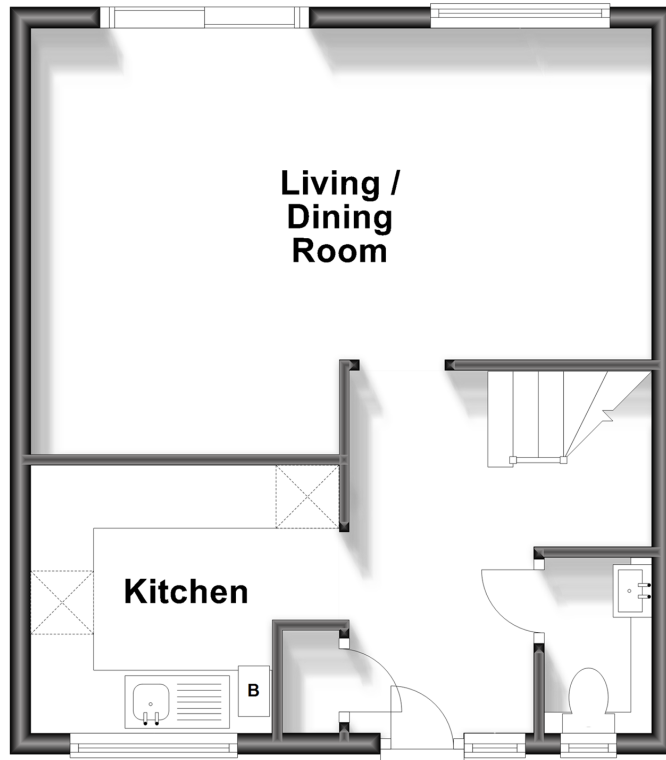
3x  1x  1x 

**Richmond Green,
Croydon, Surrey, CR0**

cubitt&west
Helping you move forwards

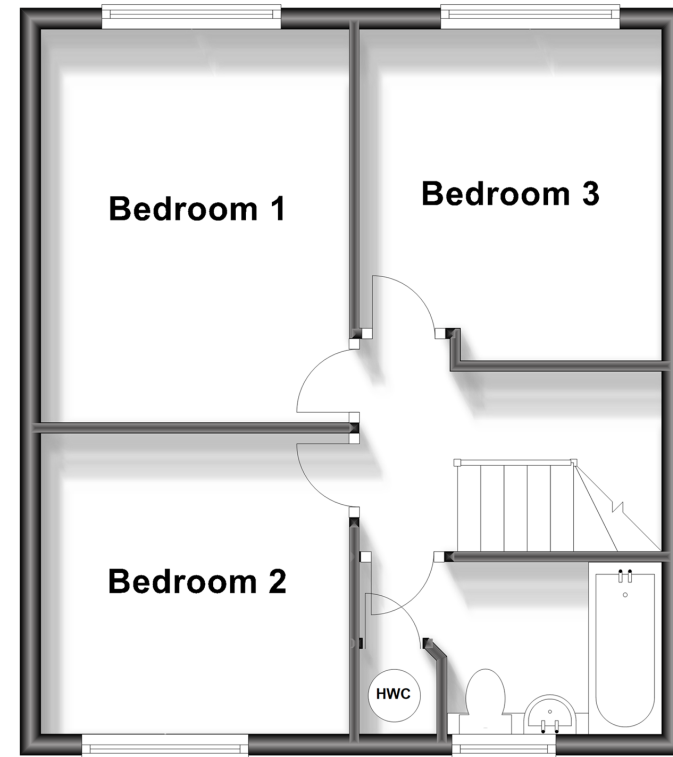
Ground Floor

Approx. 39.8 sq. metres (427.9 sq. feet)



First Floor

Approx. 39.8 sq. metres (428.7 sq. feet)



Accommodation

GROUND FLOOR

Entrance Hall: 12'2 x 5'10 (3.71m x 1.78m)

Kitchen: 9'8 x 8'5 (2.95m x 2.57m)

Living/Dining Room: 19'8 x 10'2 (6.00m x 3.10m)

Cloakroom

FIRST FLOOR

Landing

Bedroom 1: 12'9 x 9'9 (3.89m x 2.97m)

Bedroom 2: 9'9 x 9'2 (2.97m x 2.80m)

Bedroom 3: 10'2 maximum x 9'5 (3.10m x 2.87m)

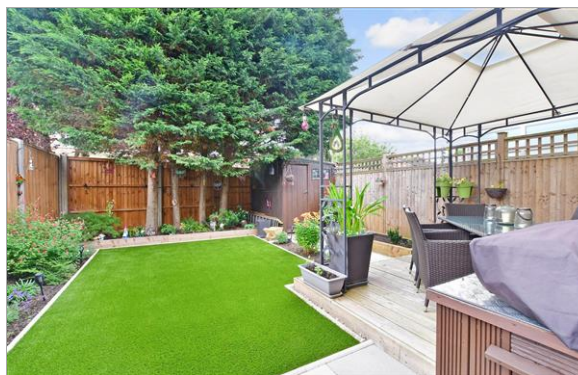
Bathroom: 9'4 x 5'4 (2.85m x 1.63m)

OUTSIDE

Driveway

Front Garden

Rear Garden



Main features

- Bright and spacious three double bedroom terraced family house
- Well maintained throughout
- Quiet and peaceful location close to Beddington Park, popular schools and public transport
- Rarely available
- Large driveway for 3 vehicles and beautifully landscaped rear garden



Nearest Schools

Primary Schools: Beddington Park Primary 0.4 miles, Duppas Junior School 1.0 miles, Bandon Hill Primary 1.0 miles
Secondary Schools: Wallington Grammar School 1.2 miles, Wilson's 1.3 miles, The John Fisher School 1.7 miles



Transport Information

Train Stations: Waddon 0.6 miles, West Croydon 1.1 miles, Wallington 1.2 miles



Address

Richmond Green, Croydon, Surrey, CR0



Directions

For directions to this property please contact us.



cubitt&west
Helping you move forwards

Call Wallington Branch 020 8647 0011 ■ cubittandwest.co.uk



- A private rental licensing scheme applies to some properties in this area, please contact us before proceeding
- Appliances & services are untested, dimensions are approximate and floor plans are not to scale

- Legal advice should be taken to verify fixtures/fittings, planning, alterations and/or lease details



22117249/20230823/JC/DK