



Price
£560,000

Freehold

3x  1x  2x 

**Banstead Way,
Wallington, Surrey, SM6**

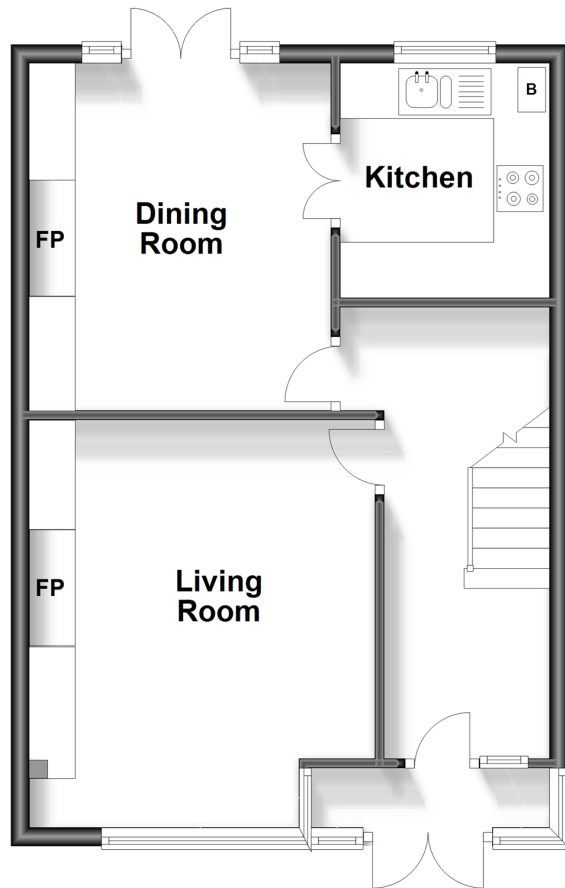
OVER 60?

Secure this property
for up to **59% less!**

cubitt&west
Helping you move forwards

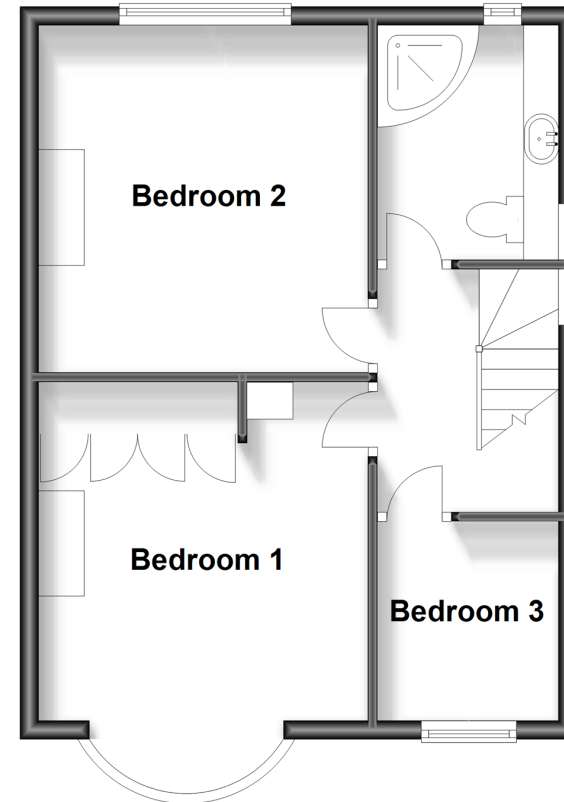
Ground Floor

Approx. 46.5 sq. metres (500.4 sq. feet)



First Floor

Approx. 42.7 sq. metres (459.7 sq. feet)



Accommodation

GROUND FLOOR

Porch
Entrance Hall
Living Room: 15'0 x 10'9 (4.58m x 3.28m)
Dining Room: 12'6 x 10'5 (3.81m x 3.18m)
Kitchen: 7'9 x 7'0 (2.36m x 2.14m)

FIRST FLOOR

Landing
Bedroom 1: 12'3 x 11'5 (3.74m x 3.48m)
Bedroom 2: 13'8 x 11'5 (4.17m x 3.48m)
Bedroom 3: 7'1 x 6'4 (2.16m x 1.93m)
Shower Room: 8'1 x 6'4 (2.47m x 1.93m)

OUTSIDE

Driveway
Rear Garden



Main features

- Large driveway and established rear garden with outdoor entertainment area
- Beautifully presented throughout
- In catchment for excellent schools including Wilsos and Wallington Girls
- Well connected via transport links including Wallington and waddon train stations and local bus routes
- Vendor suited



Nearest Schools

Primary Schools: High View Primary 0.0 miles, Foresters Primary 0.4 miles, St Elphege's RC Junior School 0.5 miles

Secondary Schools: Wilson's School 0.3 miles, Link Secondary School 0.3 miles, Sherwood Park School 0.5



Transport Information

Train Stations: Waddon 0.8 miles, Wallington 0.9 miles, Hackbridge 1.4 miles

Underground Morden 3.8 miles, Colliers Wood 4.2 miles, South Wimbledon 4.4 miles



Address

Banstead Way, Wallington, Surrey, SM6



Directions

For directions to this property please contact us.



cubitt&west
Helping you move forwards

Call Wallington Branch 020 8647 0011 ■ cubittandwest.co.uk



- A private rental licensing scheme applies to some properties in this area, please contact us before proceeding
- Appliances & services are untested, dimensions are approximate and floor plans are not to scale

- Legal advice should be taken to verify fixtures/fittings, planning, alterations and/or lease details
- Through a Homewise Home For Life Plan people aged 60+ can secure this property for up to 59% less, by purchasing a Lifetime Lease.



22117286/20230911/JC/LB