



OVER 60?

Secure this property
for up to **59% less!**

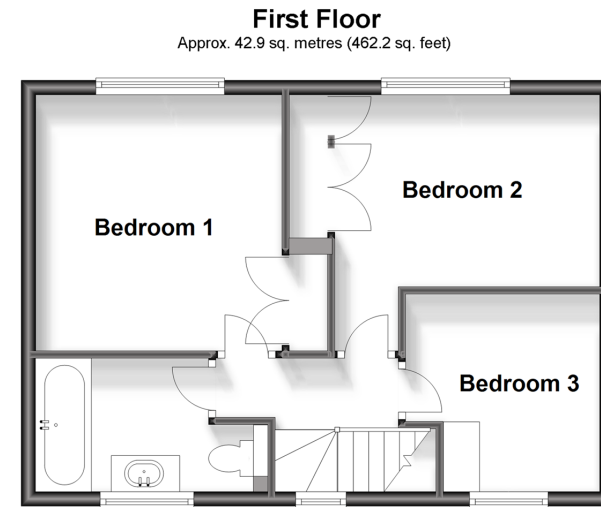
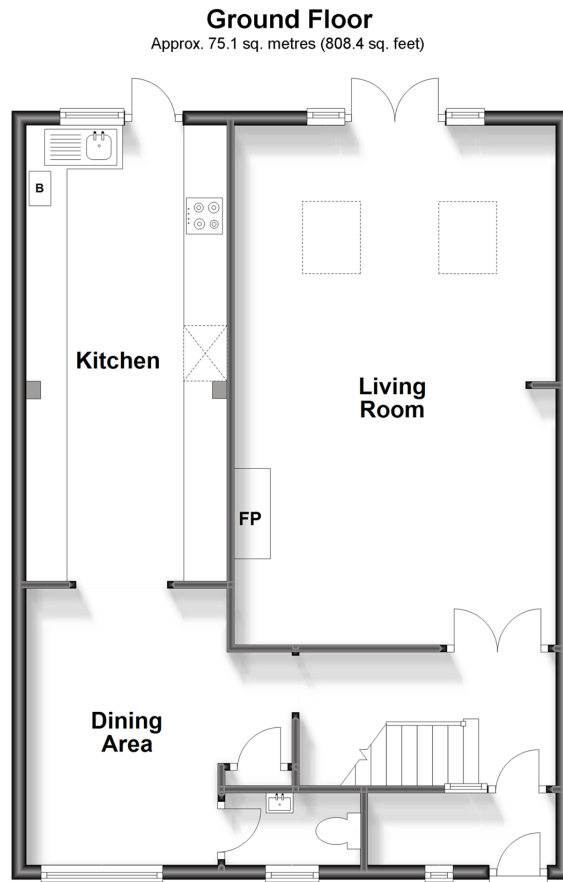
Guide Price
£500,000

Freehold

3x  1x  2x 

**Richmond Road,
Croydon, Surrey, CR0**

cubitt&west
Helping you move forwards



Accommodation

GROUND FLOOR

Porch: 8'6 x 3'2 (2.59m x 0.97m)
 Entrance Hall
 Living Room: 23'6 x 14'1 (7.17m x 4.30m)
 Dining Area: 13'0 x 8'8 (3.97m x 2.64m)
 Cloakroom
 Kitchen: 20'7 x 8'8 (6.28m x 2.64m)

FIRST FLOOR

Landing
 Bedroom 1: 11'3 x 11'2 (3.43m x 3.41m)
 Bedroom 2: 11'9 x 8'9 (3.58m x 2.67m)
 Bedroom 3: 8'8 x 8'6 (2.64m x 2.59m)
 Bathroom: 10'8 x 6'1 (3.25m x 1.86m)

OUTSIDE

Driveway
 Front And Rear Garden



Main features

- Large driveway and well kept rear garden
- Cloakroom and front porch
- Vastly extended property for spacious living
- Popular residential location close to Beddington Park
- Borough of Sutton and Catchment for excellent local schools
- Well connected via Waddon train station



Nearest Schools

Primary Schools: Beddington Park Primary 0.3 miles, Parish Church CofE Junior School 0.6 miles, High View Primary 0.6 miles

Secondary Schools: Link Secondary School 0.2 miles,



Transport Information

Train Stations: Waddon 0.4 miles, West Croydon 1.0 miles, East Croydon 1.3 miles
Underground Morden 3.7 miles, Colliers Wood 3.9 miles, South Wimbledon 4.2 miles



Address

Richmond Road, Croydon, Surrey, CR0



Directions

For directions to this property please contact us.



cubitt&west
Helping you move forwards

Call Wallington Branch 020 8647 0011 ■ cubittandwest.co.uk



- A private rental licensing scheme applies to some properties in this area, please contact us before proceeding
- Appliances & services are untested, dimensions are approximate and floor plans are not to scale

- Legal advice should be taken to verify fixtures/fittings, planning, alterations and/or lease details
- Through a Homewise Home For Life Plan people aged 60+ can secure this property for up to 59% less, by purchasing a Lifetime Lease.



22117323/20231003/JC/LB