



Price
£900,000

Freehold

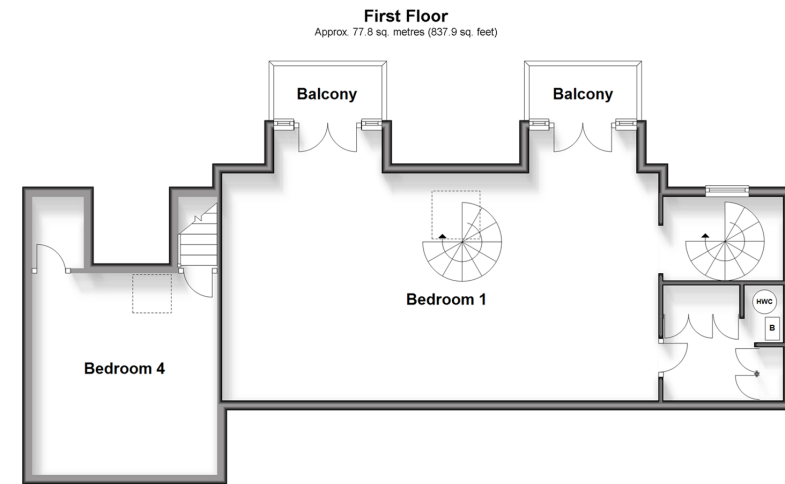
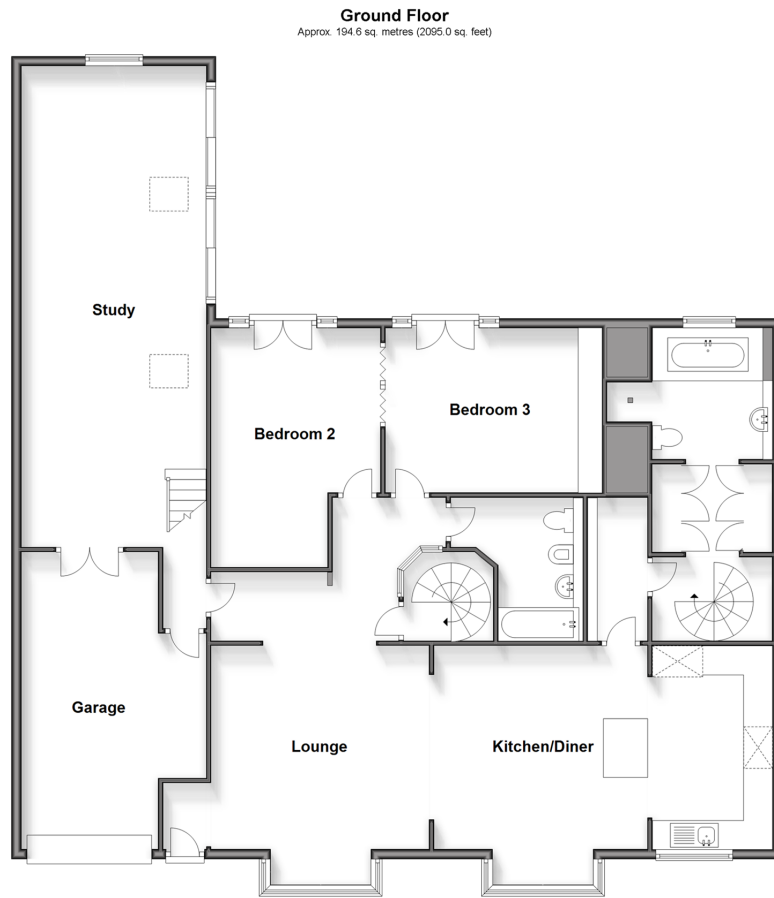
4x  2x  1x 

**Baron Grove, Mitcham,
Surrey, CR4**

OVER 60?

Secure this property
for up to **59% less!**

cubitt&west
Helping you move forwards



Accommodation

GROUND FLOOR

Entrance Hall

Lounge: 15'1 x 13'9 (4.60m x 4.19m)

Kitchen/Diner: 23'5 x 13'10 (7.14m x 4.22m)

Bedroom 2: 13'11 up to fitted wardrobes x 11'8 (4.24m x 3.56m)

Bedroom 3: 14'1 x 11'5 (4.30m x 3.48m)

Utility Area: 9'11 x 4'2 (3.02m x 1.27m)

Bathroom

Second Bathroom

Study: 33'5 x 12'11 (10.19m x 3.94m)

FIRST FLOOR

Landing

Bedroom 1: 30'1 x 19'2 (9.18m x 5.85m)

Balconies

Bedroom 4: 14'2 x 12'8 (4.32m x 3.86m)

OUTSIDE

Driveway

Garage

Rear Garden



Main features

- Rarely available detached bungalow in an ideal location
- Offering spacious and versatile accommodation which makes it easy to entertain
- 2 spiral staircases and 2 bathrooms
- Driveway and rear garden
- Situated in a popular residential road close to local amenities and Mitcham tram stop



Nearest Schools

Primary: SS Peter and Paul Catholic Primary 0.1 miles, Cranmer Primary 0.2 miles, Benedict Primary 0.2 miles

Secondary: Cricket Green School 0.1 miles, Melrose School 0.2 miles, Bishopsford Community School 0.6 miles



Transport Information

Train Stations: Mitcham Junction 0.6 miles, Mitcham Eastfields 0.8 miles, Morden South 1.3 miles
Mitcham tram stop 0.3 miles



Address

Baron Grove, Mitcham, Surrey, CR4



Directions

For directions to this property please contact us.



cubitt&west
Helping you move forwards

Call Wallington Branch 020 8647 0011 ■ cubittandwest.co.uk



- A private rental licensing scheme applies to some properties in this area, please contact us before proceeding
- Appliances & services are untested, dimensions are approximate and floor plans are not to scale

- Legal advice should be taken to verify fixtures/fittings, planning, alterations and/or lease details
- Through a Homewise Home For Life Plan people aged 60+ can secure this property for up to 59% less, by purchasing a Lifetime Lease.



22117327/20240319/GG/DK