



**Price**

**£150,000**

**Leasehold**

1x  1x  1x 

**Marlborough Court,  
Cranley Gardens,  
Wallington, Surrey, SM6**

**cubitt&west**  
Helping you move forwards





## Main features

- Ground floor retirement apartment available for over 60's
- Close to Wallington high street and local amenities
- 24 hour call service for everyone's peace of mind
- Communal gardens, lounge, laundry room and residents parking
- Lift service

## Accommodation

### GROUND FLOOR

Entrance Hall: 8'1 x 7'2 (2.47m x 2.19m)

Living Room: 20'6 x 10'9 (6.25m x 3.28m)

Kitchen : 7'9 x 7'7 (2.36m x 2.31m)

Bedroom : 16'7 x 9'3 (5.06m x 2.82m)

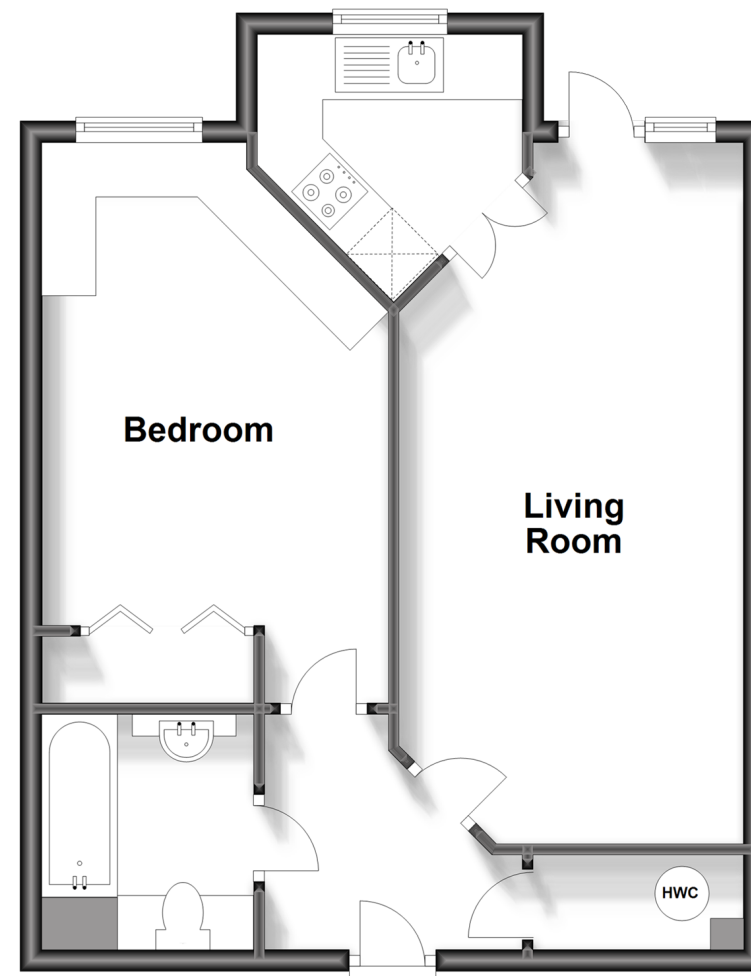
Bathroom: 6'9 x 5'8 (2.06m x 1.73m)

### OUTSIDE

Communal Gardens  
Residents Parking

## Ground Floor

Approx. 50.6 sq. metres (544.4 sq. feet)



**Call Wallington - 020 8647 0011 ■ [cubittandwest.co.uk](http://cubittandwest.co.uk)**

- A private rental licensing scheme applies to some properties in this area, please contact us before proceeding
- Legal advice should be taken to verify fixtures/fittings, planning, alterations and/or lease details
- Appliances & services are untested, dimensions are approximate and floor plans are not to scale



22117329/20231005/JC/NL