



Price

£750,000

Freehold

5x  3x  2x 

**Tamworth Lane,
Mitcham, Surrey, CR4**

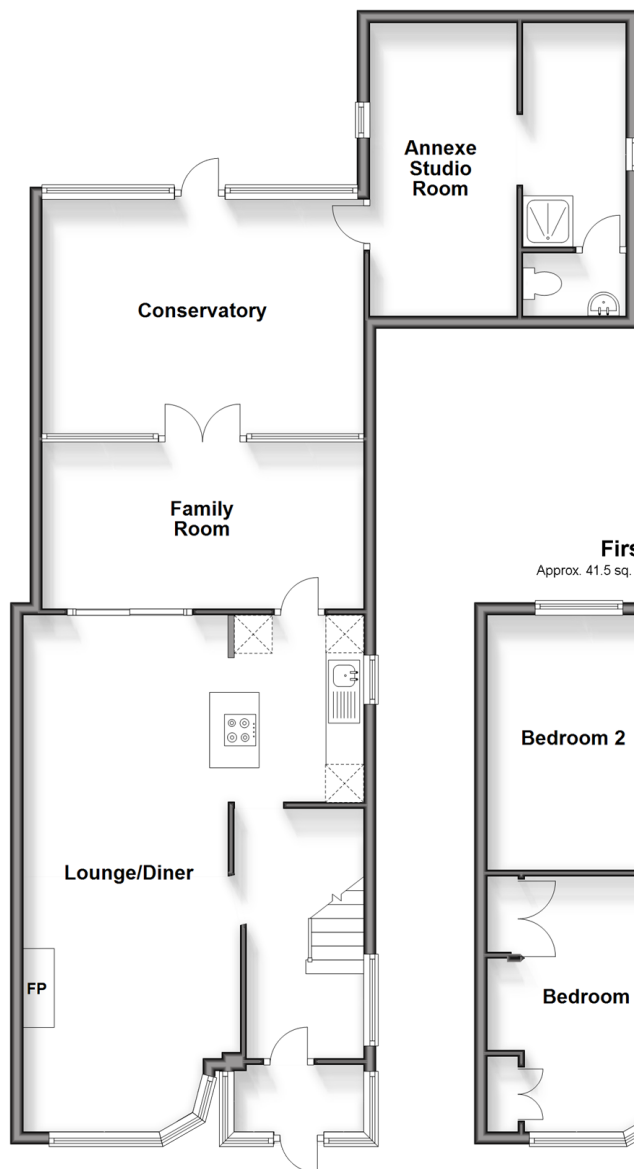
OVER 60?

Secure this property
for up to **59% less!**

cubitt&west
Helping you move forwards

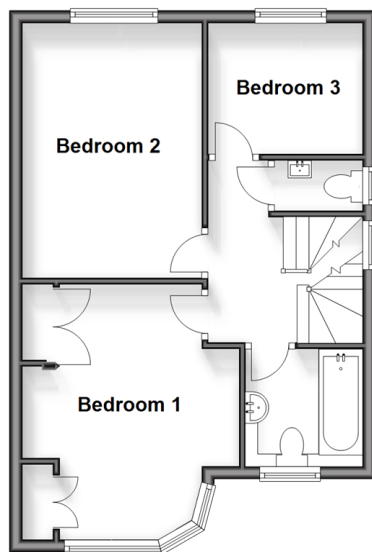
Ground Floor

Approx. 97.2 sq. metres (1046.3 sq. feet)



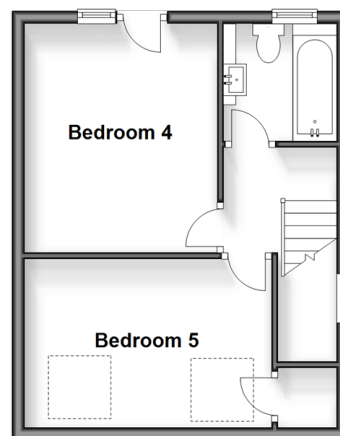
First Floor

Approx. 41.5 sq. metres (447.1 sq. feet)



Second Floor

Approx. 32.1 sq. metres (345.5 sq. feet)



Accommodation

GROUND FLOOR

Entrance Hall

Lounge/Diner: 26'4 x 12'5 (8.03m x 3.79m)

Kitchen : 10'3 x 7'3 (3.13m x 2.21m)

Family Room: 16'9 x 9'3 (5.11m x 2.82m)

Conservatory: 17'0 x 12'3 (5.19m x 3.74m)

Annexe (Studio Room): 15'3 x 14'0 (4.65m x 4.27m)

Shower Room

FIRST FLOOR

Landing

Bedroom 1: 13'6 x 10'8 (4.12m x 3.25m)

Bedroom 2: 13'4 x 10'0 (4.07m x 3.05m)

Bedroom 3: 8'5 x 7'2 (2.57m x 2.19m)

Bathroom

Separate Toilet

SECOND FLOOR

Landing

Bedroom 4: 11'8 x 10'7 (3.56m x 3.23m)

Bedroom 5: 12'9 x 8'7 (3.89m x 2.62m)

Bathroom 2

OUTSIDE

Off-Road Parking

Rear Garden



Main features

- Spacious family home offering 5 bedrooms plus annexe studio room (former garage)
- Off-road parking for several cars
- Opportunity to extend further (subject to planning permission being obtained)
- Close to Mitcham Common and local town centre
- Within easy reach of Mitcham Eastfields train station and multiple bus routes
- Trains to Victoria station in just 20 minutes



Nearest Schools

Primary: St Thomas of Canterbury Catholic 0.3 miles, Lonesome 0.3 miles, St Mark's 0.3 miles

Secondary: St Marks C of E Academy 0.0 miles, Cricket Green School 0.7 miles, Melrose School 0.7 miles



Transport Information

Train Stations: Mitcham Eastfields 0.1 miles, Mitcham Junction 0.9 miles, Tooting 1.0 miles



Address

Tamworth Lane, Mitcham, Surrey, CR4



Directions

For directions to this property please contact us.



cubitt&west
Helping you move forwards

Call Wallington Branch 020 8647 0011 ■ cubittandwest.co.uk



- A private rental licensing scheme applies to some properties in this area, please contact us before proceeding
- Appliances & services are untested, dimensions are approximate and floor plans are not to scale

- Legal advice should be taken to verify fixtures/fittings, planning, alterations and/or lease details
- Through a Homewise Home For Life Plan people aged 60+ can secure this property for up to 59% less, by purchasing a Lifetime Lease.



22117450/20240325/NL/NL