



OVER 60?

Secure this property
for up to **59% less!**

Price

£300,000

Leasehold

1x  1x  1x 

**Belmont Road,
Wallington, Surrey, SM6**

cubitt&west
Helping you move forwards



Main features

- **Luxury period conversion**
- **Situated moments away from Wallington high street and train station**
- **Own entrance**
- **Ideal for a first-time purchase**
- **Newly converted in 2017, it has the perfect blend of contemporary living and its own original character**

Accommodation

LOWER-GROUND FLOOR

Entrance Hall

Living Area: 16'0 x 15'3 into bay (4.88m x 4.65m)

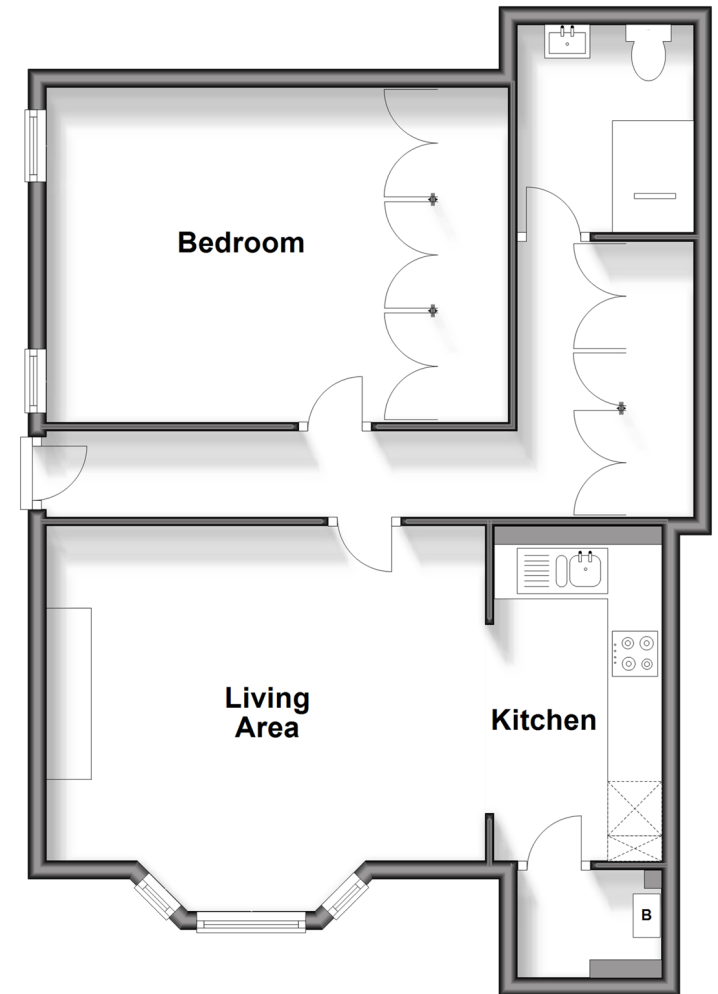
Kitchen: 11'6 x 6'9 (3.51m x 2.06m)

Bedroom: 13'9 up to fitted wardrobes x 12'0 (4.19m x 3.66m)

Shower Room

Lower Ground Floor

Approx. 64.2 sq. metres (690.7 sq. feet)



Call Wallington - 020 8647 0011 ■ cubittandwest.co.uk

- A private rental licensing scheme applies to some properties in this area, please contact us before proceeding
- Legal advice should be taken to verify fixtures/fittings, planning, alterations and/or lease details
- Appliances & services are untested, dimensions are approximate and floor plans are not to scale
- Through a Homewise Home For Life Plan people aged 60+ can secure this property for up to 59% less, by purchasing a Lifetime Lease.



22117530/20240411/GG/DK