



Price
£425,000

Freehold

2x  1x  1x 

**Arran Close, Wallington,
Surrey, SM6**

OVER 60?

Secure this property
for up to **59% less!**

cubitt&west
Helping you move forwards



Main features

- Mid-terrace house situated in a peaceful cul-de-sac location
- Located only moments away from local shops and transport links
- Stunning conservatory
- Views overlooking St. Mary's playing fields
- Low-maintenance rear garden and garage en-bloc

Accommodation

GROUND FLOOR

Entrance Hall

Living Room: 13'10 x 12'1 (4.22m x 3.69m)

Kitchen: 12'0 x 7'5 (3.66m x 2.26m)

Conservatory: 14'10 x 8'9 (4.52m x 2.67m)

FIRST FLOOR

Landing

Bedroom 1: 12'8 maximum x 11'8 up to fitted wardrobes (3.86m x 3.56m)

Bedroom 2: 11'11 maximum x 7'8 (3.63m x 2.34m)

Bathroom

OUTSIDE

Front Garden

Garage En-Bloc

Rear Garden

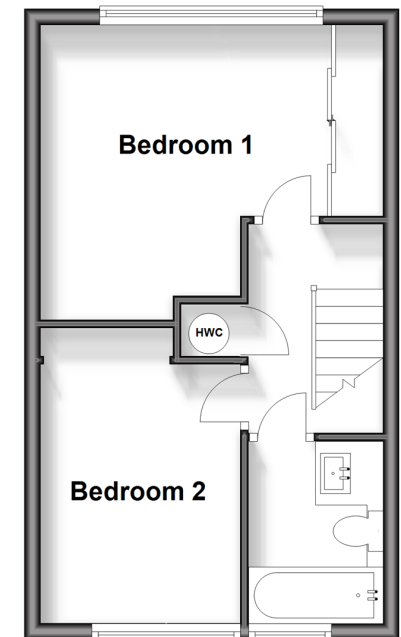
Ground Floor

Approx. 43.1 sq. metres (464.3 sq. feet)



First Floor

Approx. 31.5 sq. metres (338.5 sq. feet)



Call Wallington - 020 8647 0011 ■ cubittandwest.co.uk

- A private rental licensing scheme applies to some properties in this area, please contact us before proceeding
- Legal advice should be taken to verify fixtures/fittings, planning, alterations and/or lease details
- Appliances & services are untested, dimensions are approximate and floor plans are not to scale
- Through a Homewise Home For Life Plan people aged 60+ can secure this property for up to 59% less, by purchasing a Lifetime Lease.



22117536/20240502/GG/DK