



**Price**

**£180,000**

**Leasehold**

1x  1x  0x 

**Burniston Court, Manor  
Road, Wallington,  
Surrey, SM6**

**OVER 60?**

Secure this property  
for up to **59% less!**

**cubitt&west**  
Helping you move forwards



## Main features

- Ground floor studio apartment
- Situated in heart of Wallington town centre
- Great access to local amenities and transport links
- Separate kitchen
- Allocated parking space
- Communal gardens
- No onward chain

## Accommodation

### GROUND FLOOR

Entrance Hall

Studio: 14'8 x 12'1 (4.47m x 3.69m)

Kitchen: 8'9 x 4'11 (2.67m x 1.50m)

Bathroom

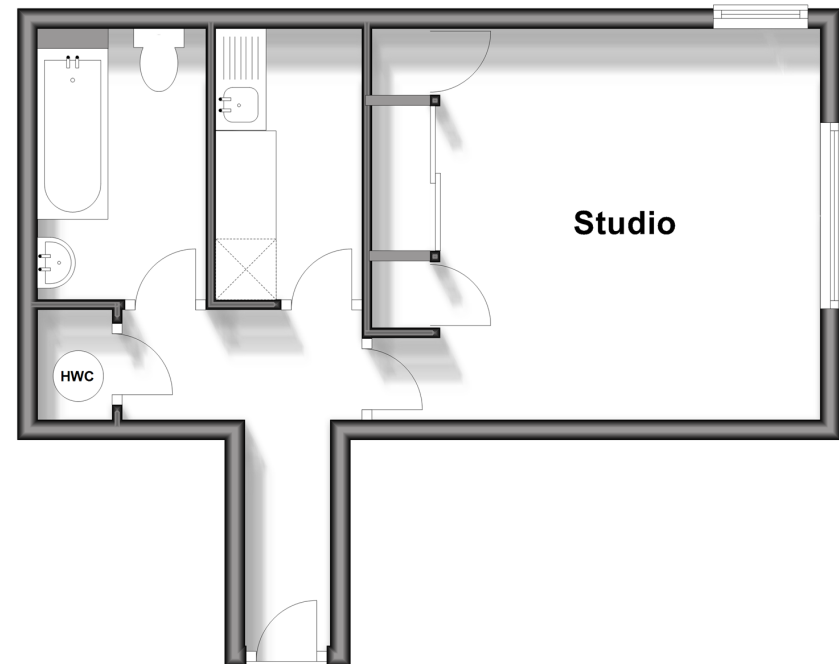
### OUTSIDE

Allocated Parking

Communal Gardens

## Ground Floor

Approx. 31.8 sq. metres (342.3 sq. feet)



**Call Wallington - 020 8647 0011 ■ [cubittandwest.co.uk](http://cubittandwest.co.uk)**

- A private rental licensing scheme applies to some properties in this area, please contact us before proceeding
- Appliances & services are untested, dimensions are approximate and floor plans are not to scale

- Legal advice should be taken to verify fixtures/fittings, planning, alterations and/or lease details
- Through a Homewise Home For Life Plan people aged 60+ can secure this property for up to 59% less, by purchasing a Lifetime Lease.