



Guide Price
£425,000

Freehold

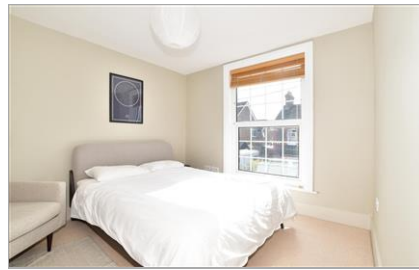
3x  1x  1x 

**Petlands Road,
Haywards Heath, West
Sussex, RH16**

OVER 60?

Secure this property
for up to **59% less!**

cubitt & west
Helping you move forwards



Main features

- Semi-detached house with no forward chain
- Walking distance to town & train station
- Off road parking for 2 cars
- Current vendors installed a downstairs toilet
- Potential to extend or do a loft conversion

Accommodation

GROUND FLOOR

Hallway
Cloakroom
Dining Area / Lounge: (L-shaped) 16'2 x 11'2 (4.93m x 3.41m) plus 11'4 x 10'9 (3.46m x 3.28m)
Kitchen: 11'11 x 9'0 (3.63m x 2.75m)

FIRST FLOOR

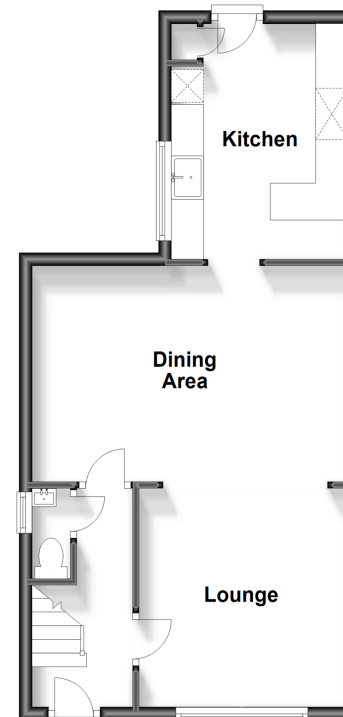
Landing
Bedroom 1: 10'11 x 10'2 (3.33m x 3.10m)
Bedroom 2: 10'9 x 8'10 (3.28m x 2.69m)
Bedroom 3: 7'7 x 7'0 (2.31m x 2.14m)
Bathroom

OUTSIDE

Front & Rear Gardens
Off Road Parking

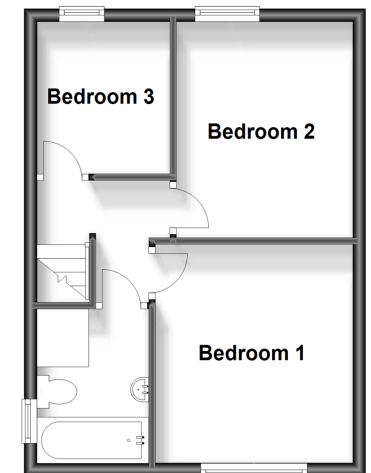
Ground Floor

Approx. 42.9 sq. metres (461.9 sq. feet)



First Floor

Approx. 33.0 sq. metres (355.5 sq. feet)



Call Haywards Heath - 01444 411132 ■ cubittandwest.co.uk

■ Legal advice should be taken to verify fixtures/fittings, planning, alterations and/or lease details
■ Through a Homewise Home For Life Plan people aged 60+ can secure this property for up to 59% less, by purchasing a Lifetime Lease.

■ Appliances & services are untested, dimensions are approximate and floor plans are not to scale



22703371/20231024/DD/DD