



Price
£675,000

Freehold

4x  2x  1x 

**York House, Cherry
Lane, Bolney, Haywards
Heath, West Sussex,
RH17**

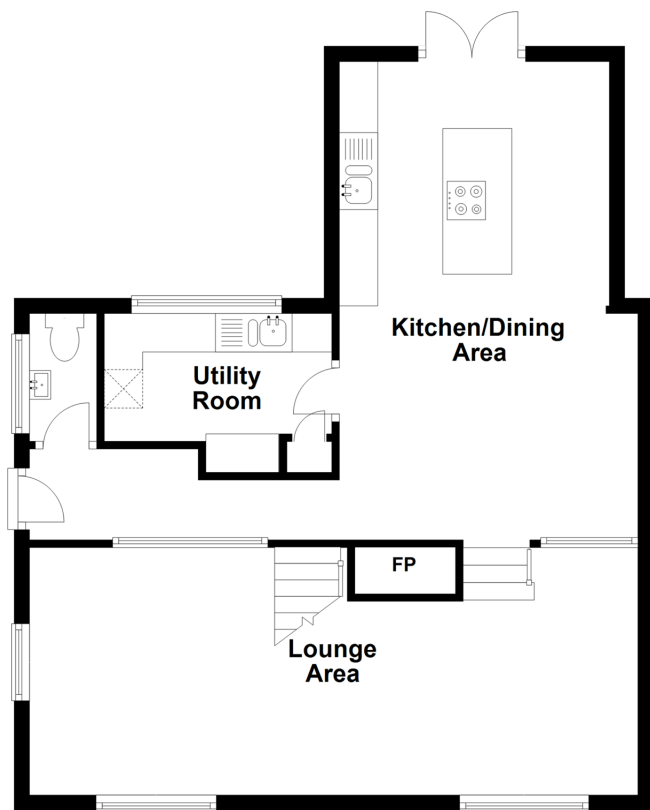


Video Tour available

cubitt&west
Helping you move forwards

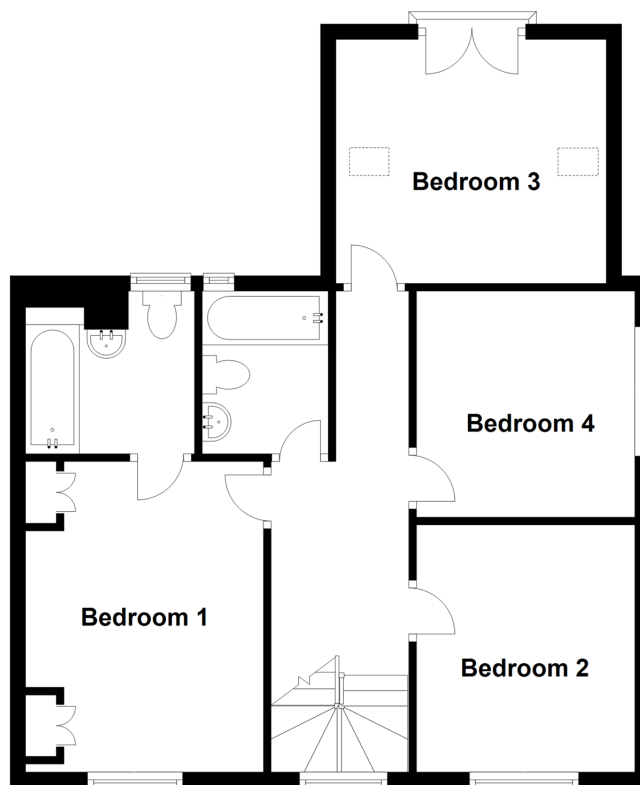
Ground Floor

Approx. 61.2 sq. metres (658.3 sq. feet)



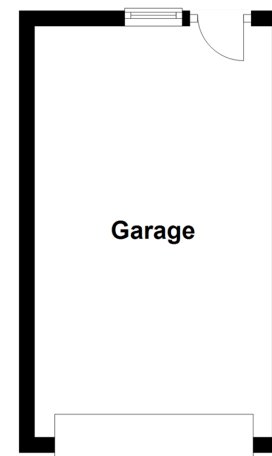
First Floor

Approx. 61.6 sq. metres (663.5 sq. feet)



Garage

Approx. 16.6 sq. metres (178.6 sq. feet)



Accommodation

GROUND FLOOR

Entrance Hallway

Cloakroom

Lounge Area: 26'9 x 10'5 (8.16m x 3.18m)

Kitchen / Dining Area: 21'8 x 12'9 (6.61m x 3.89m)

Utility Room: 9'10 x 6'9 (3.00m x 2.06m)

FIRST FLOOR

Landing

Bedroom 1: 13'10 x 9'10 (4.22m x 3.00m)

En Suite Bathroom

Bedroom 2: 11'4 x 9'5 (3.46m x 2.87m)

Bedroom 3: 10'5 x 9'9 (3.18m x 2.97m)

Bedroom 4: 10'4 x 9'11 (3.15m x 3.02m)

Bathroom

OUTSIDE

Garage: 17'6 x 10'6 (5.34m x 3.20m)

Off Road Parking

Front and Rear Gardens



Main features

- No Forward Chain
- Extended detached house
- Modern & refurbished throughout
- Large living area with central double-sided fireplace
- Refitted bathroom & en-suite
- Secluded rear garden
- Detached garage and parking for multiple vehicles



Nearest Schools

Primary Schools: Bolney CofE Primary 0.4 miles, Twineham CofE Primary 2.2 miles, Warninglid Primary 2.4 miles

Secondary Schools: Farney Close School 0.7 miles, St



Transport Information

Train Stations: Wivelsfield 4.1 miles, Haywards Heath 4.1 miles, Burgess Hill 4.3 miles



Address

York House, Cherry Lane, Bolney, Haywards Heath, West Sussex, RH17



Directions

For directions to this property please contact us.

