



Price

£110,000

Leasehold

1x  1x  1x 

**Heath Court, Heath
Road, Haywards Heath,
West Sussex, RH16**

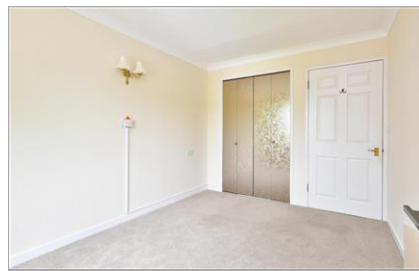
OVER 60?

You could get up to
59% off the price!*



Video Tour available

cubitt&west
Helping you move forwards



Main features

- +++ No forward chain +++
- Ground floor apartment
- Over 60's
- Double bedroom
- Walking distance to Marks & Spencer and Waitrose

Accommodation

GROUND FLOOR

Hallway

Lounge: 15'5 x 10'5 (4.70m x 3.18m)

Kitchen: 7'3 x 5'4 (2.21m x 1.63m)

Bedroom 1: 11'10 x 8'9 (3.61m x 2.67m)

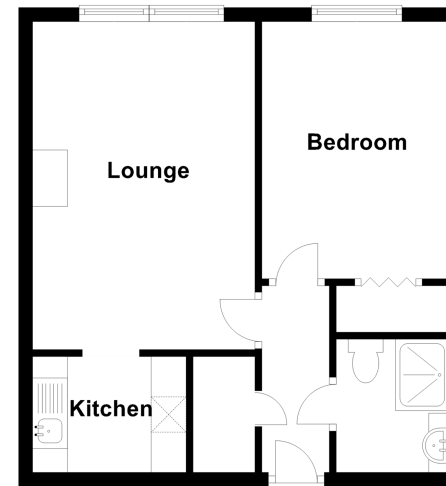
Shower Room

OUTSIDE

Communal Gardens

Ground Floor

Approx. 38.1 sq. metres (409.9 sq. feet)



Call Haywards Heath - 01444 411132 ■ cubittandwest.co.uk

■ Legal advice should be taken to verify fixtures/fittings, planning, alterations and/or lease details
 ■ Our Homewise partnership offer a 'Home for Life' plan to buyers over 60, granting a lifetime lease for your protection and reducing the purchase price by up to 59%

■ Appliances & services are untested, dimensions are approximate and floor plans are not to scale