



**Price**  
**£290,000**

**Leasehold**

1x  1x  1x 

**Fleur de Lis, Bolnore  
Road, Haywards Heath,  
West Sussex, RH16**



Video Tour available

**cubitt&west**  
Helping you move forwards





## Main features

- No forward chain
- Spacious first floor apartment
- Fitted kitchen with 'Neff' integrated appliances
- 24 Hour emergency call out and security entrance system
- Close to Haywards Heath town centre

## Accommodation

### FIRST FLOOR

Hallway

Lounge / Dining Area: 20'3 x 13'6 (6.18m x 4.12m)

Kitchen: 7'10 x 6'7 (2.39m x 2.01m)

Bedroom: 17'4 x 12'8 (5.29m x 3.86m)

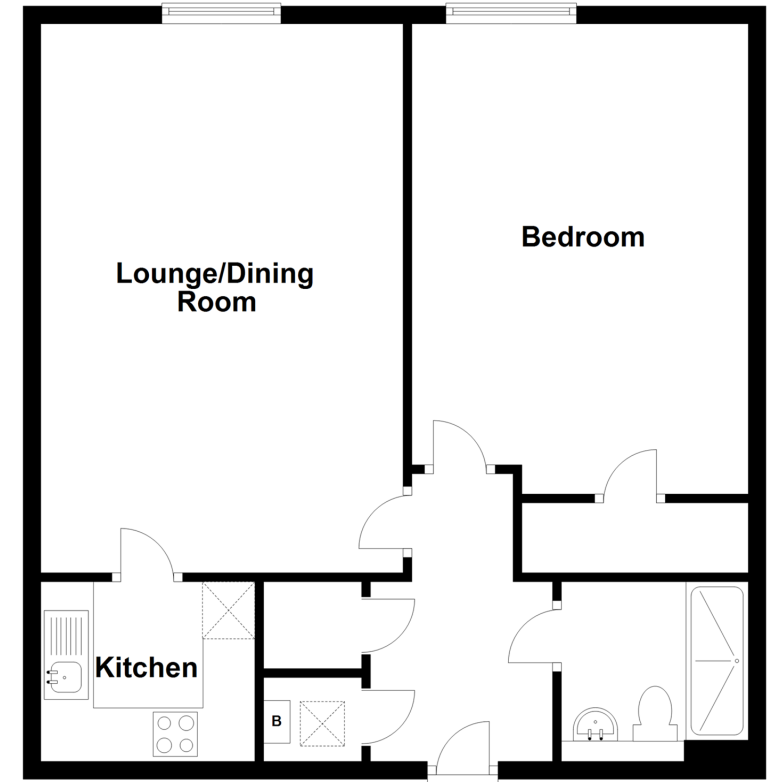
Shower Room

### OUTSIDE

Communal Gardens

## First Floor

Approx. 66.5 sq. metres (715.8 sq. feet)



**Call Haywards Heath - 01444 411132 ■ [cubittandwest.co.uk](http://cubittandwest.co.uk)**

- Legal advice should be taken to verify fixtures/fittings, planning, alterations and/or lease details
- Appliances & services are untested, dimensions are approximate and floor plans are not to scale