



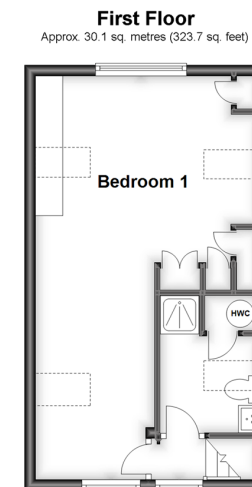
Price
£850,000

Freehold

5x  3x  2x 

**Theobalds Road,
Burgess Hill,
West Sussex, RH15**

cubitt&west
Helping you move forwards



Accommodation

GROUND FLOOR

Hallway
Kitchen/Living Room: 36'11 x 13'0 (11.26m x 3.97m)
Dining Area
Utility Room: 8'10 x 4'9 (2.69m x 1.45m)
Conservatory: 18'1 x 10'1 (5.52m x 3.08m)
Bedroom 2: 13'11 x 10'10 (4.24m x 3.30m)
Bedroom 3: 12'0 x 10'9 (3.66m x 3.28m)
Bedroom 4: 10'0 x 8'2 (3.05m x 2.49m)
Bedroom 5: 9'9 x 9'9 (2.97m x 2.97m)
Bathroom
Shower Room

FIRST FLOOR

Landing
Bedroom 1: 24'2 x 13'4 (7.37m x 4.07m)
En Suite Shower Room

OUTSIDE

Front and Rear Gardens
Double Garage: 40'4 x 17'10 (12.30m x 5.44m)
Off Road Parking



Main features

- No forward chain
- Completely refurbished throughout
- Set in a quiet location and close to Wivelsfield train station
- Convenience of having a double garage and off road parking
- Large secluded rear garden



Nearest Schools

Primary Schools: Manor Field Primary 0.4 miles, Sheddingdean Community Primary 0.8 miles, Birchwood Grove Community Primary, Burgess Hill 1.3 miles

Secondary Schools: Burgess Hill School for Girls 1.3 miles,



Transport Information

Train Stations: Wivelsfield 0.4 miles, Burgess Hill 1.2 miles, Haywards Heath 2.4 miles



Address

Theobalds Road, Burgess Hill, West Sussex, RH15



Directions

For directions to this property please contact us.



cubitt&west
Helping you move forwards

Call Haywards Heath Branch 01444 411132 ■ cubittandwest.co.uk



■ Legal advice should be taken to verify fixtures/fittings, planning, alterations and/or lease details ■ Appliances & services are untested, dimensions are approximate and floor plans are not to scale



22705535/20231103/DD/DD