



Guide Price
£750,000

Freehold

4x  3x  2x 

**Charters Gate Way,
Wivelsfield Green,
Haywards Heath,
East Sussex, RH17**

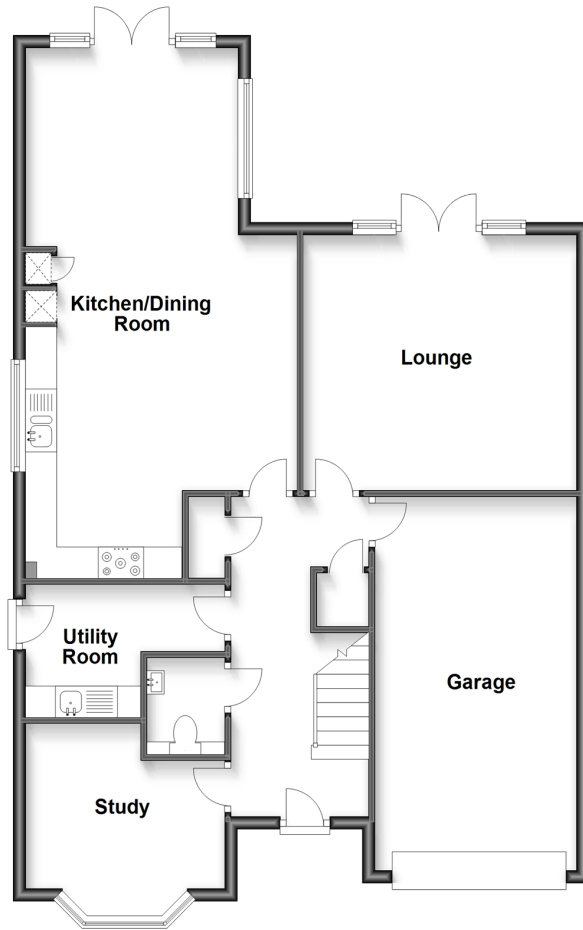
OVER 60?

Secure this property
for up to **59% less!**

cubitt&west
Helping you move forwards

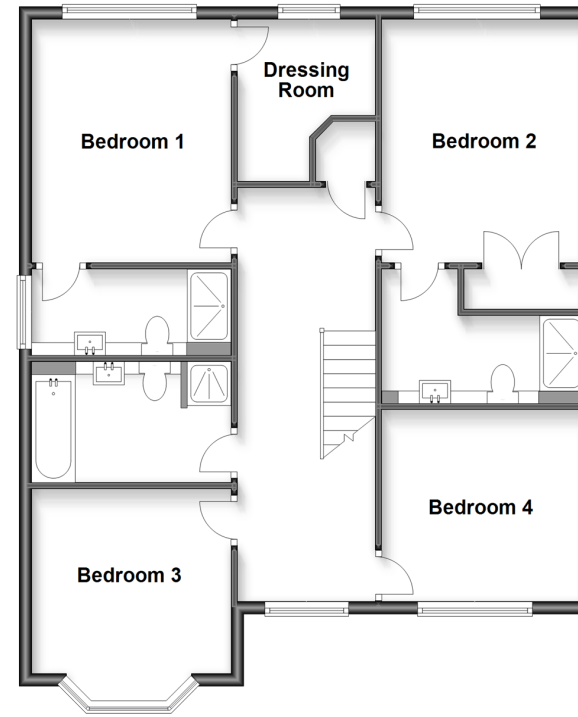
Ground Floor

Approx. 98.8 sq. metres (1063.0 sq. feet)



First Floor

Approx. 85.5 sq. metres (920.0 sq. feet)



Accommodation

GROUND FLOOR

Hallway

Cloakroom

Study: 11'4 x 10'5 (3.46m x 3.18m)

Kitchen/Dining Room: 27'8 x 14'3 (8.44m x 4.35m)

Utility Room : 10'5 x 6'11 (3.18m x 2.11m)

Lounge: 14'4 x 13'4 (4.37m x 4.07m)

En Suite Shower Room

Bedroom 2: 12'9 x 10'7 (3.89m x 3.23m)

En Suite Shower Room 2

Bedroom 3: 12'3 x 10'5 (3.74m x 3.18m)

Bedroom 4: 10'8 x 10'1 (3.25m x 3.08m)

Bathroom

FIRST FLOOR

Landing

Bedroom 1: 12'5 x 10'5 (3.79m x 3.18m)

Dressing Room: 8'9 x 7'5 (2.67m x 2.26m)

OUTSIDE

Garage: 20'4 x 10'4 (6.20m x 3.15m)

Off Road Parking

Front & Rear Gardens



Main features

- Set in the idyllic village of Wivelsfield Green
- Used to be a show home with all the added extras and has a remainder of NHBC guarantee
- Large kitchen with integral appliances
- 4 Double bedrooms, with bedroom 1 having the luxury of a dressing room and en suite
- Convenience of a large integral garage and off road parking



Nearest Schools

Primary Schools: Wivelsfield Primary 0.2 miles, Manor Field Primary 2.1 miles, Chailey St Peter's C of E Primary 2.2 miles

Secondary Schools: Chailey Heritage School 1.8 miles,



Transport Information

Train Stations: Wivelsfield 2.1 miles, Plumpton 2.5 miles, Burgess Hill 2.6 miles



Address

Charters Gate Way, Wivelsfield Green, Haywards Heath, East Sussex, RH17



Directions

For directions to this property please contact us.



cubitt&west
Helping you move forwards

Call Haywards Heath Branch 01444 411132 ■ cubittandwest.co.uk



■ Legal advice should be taken to verify fixtures/fittings, planning, alterations and/or lease details ■ Appliances & services are untested, dimensions are approximate and floor plans are not to scale
■ Through a Homewise Home For Life Plan people aged 60+ can secure this property for up to 59% less, by purchasing a Lifetime Lease.



22705545/20230627/DD/DD